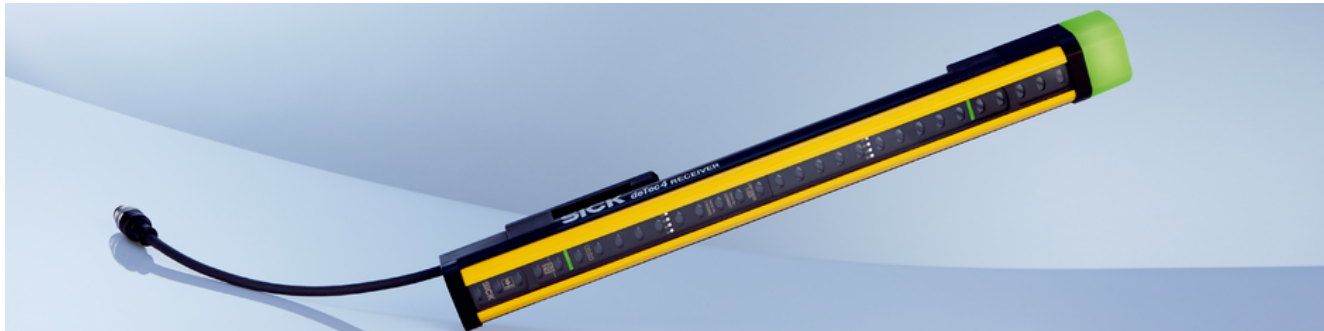


# deTec

Because we take safety to the next level

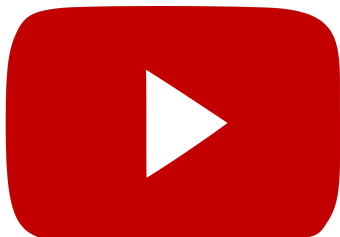
**SICK**  
Sensor Intelligence.

Advantages



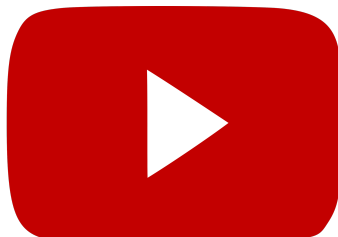
### Intelligent safety light curtain for high productivity

Whether you are in the automotive industry, mechanical engineering or consumer goods production: high productivity and a high degree of flexibility and automation are decisive competitive advantages in the era of digitalization. The deTec safety light curtain helps operate machines and systems economically with intelligent functions. In addition to the extremely rugged housing and the innovative diagnostic functions, deTec impresses with easy connection, configuration and alignment.



**Intelligent functions**

Save space and costs when designing machines. Using Smart Box Detection, you can dispense with the use of external signals or devices.



**Fast commissioning**

Here you can see in five simple steps how to quickly mount and align the deTec.

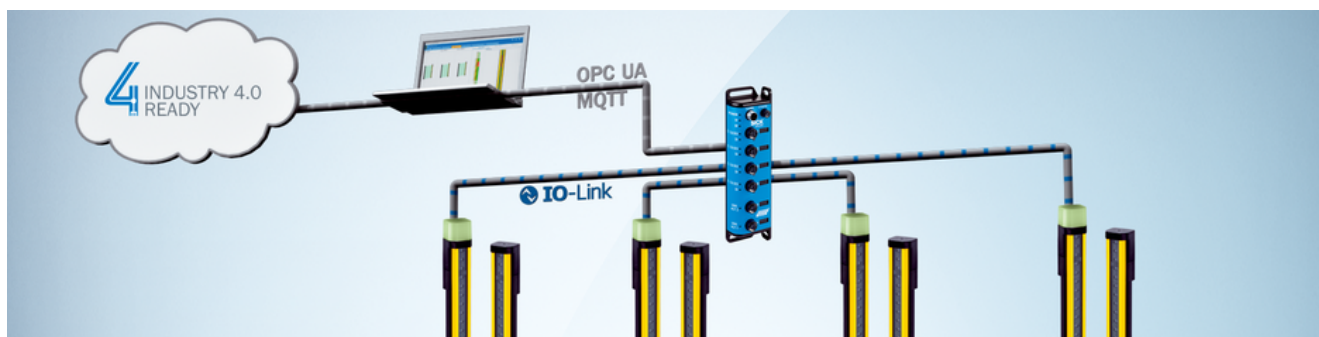


**Simple diagnostics**

Take advantage of comprehensive on-site diagnostics via smartphone app and NFC interface.

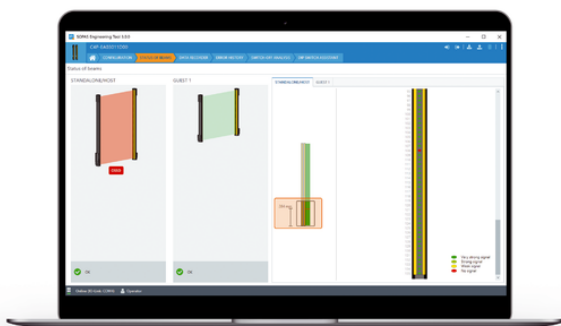


**Invest in a secure and profitable future with deTec**



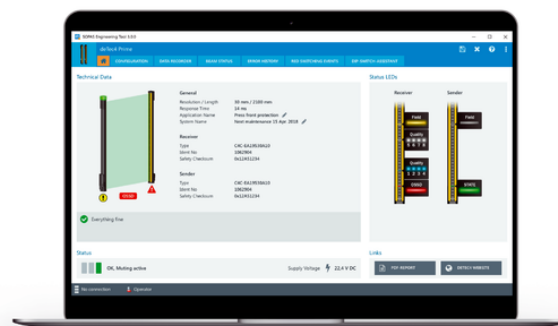
## The deTec unites safety and automation in one sensor

In addition to a high level of safety, intelligent safety sensors also offer a wide range of automation options. The deTec4 product variant not only protects people, but also provides valuable data for downstream process steps via IO-Link. This means you don't need as many sensors. The sensor also makes a valuable contribution to the mobile maintenance of your machines or plants.



### Versatile automation options

Use extensive process data for downstream automation processes, e.g. for height measurements.



### More efficient cause analysis

Comprehensive service data allows you to perform predictive maintenance, e.g. when sensors start to get dirty, and for quick and easy cause analysis.



**Increase the level of automation and process transparency of your machines and plants**



## From a single mold and always flexible

The deTec safety light curtain is ready for use in no time at all. Thanks to the uniform housing and mounting concept as well as standard cables, the device is always equally easy to implement in the machine design.



### Flexible connection design

Thanks to its high modularity, the deTec allows for functions to be activated quickly and easily by means of the appropriate system plug for each application, and completely without software.



### Uniform housing and mounting concept

deTec and brackets are tailored to one another and flexible to use. Housing profile, end caps, and brackets are all from a single source and offer a secure hold as well as many alignment possibilities.

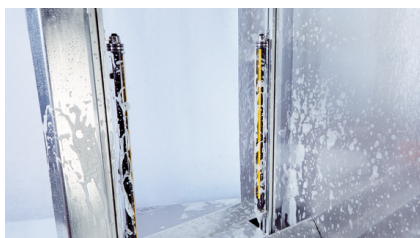


**Benefit from minimal cabling, installation and configuration work**



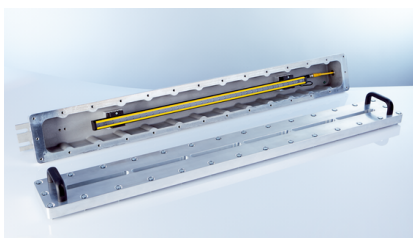
## Safety light curtains for the strict requirements of your industry

Depending on the area of application, the topic of safety encompasses other aspects: in food production and processing, hygiene standards must also be taken into account. In explosion-hazardous areas, it is a matter of compliance with explosion protection standards. In the machine tool industry, the resistance of the safety light curtain to the chemicals in coolants, lubricants and cleaners often plays a decisive role. When protecting machines and systems, there are also high requirements for shock and vibration resistance and thus sensor availability.



### High hygiene standards

With its easy-to-clean housing made of food-safe plastic and stainless steel, the deTec IP69K is ideal for protecting wash-down zones.



### Explosive areas

Different Ex zones can be protected by different deTec variants.

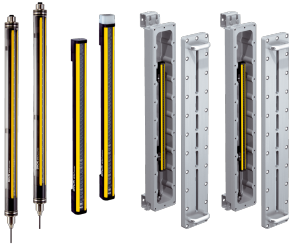


### Resistant to chemicals

The deTec HG variants with a front screen made of chemically-hardened float glass is especially resistant to coolants and lubricants.



Take advantage of the wide range of applications of the deTec



## Technical data overview

<b>Safety level</b>	PL c, SIL 1, Type 2 PL e, SIL 3, Type 4
<b>Resolution</b>	14 mm / 30 mm (depending on type)
<b>Scanning range</b>	2.5 m ... 30 m (depending on type)
<b>Protective field height</b>	300 mm ... 2,100 mm (depending on type)
<b>Enclosure rating</b>	IP65 IP67 IP66 IP69K (depending on type)
<b>Ambient operating temperature</b>	-30 °C ... +55 °C (depending on type)

## Product description

The intelligent deTec safety light curtains are ideal for the protection of hazardous areas, entrances, and hazardous points. Modern technologies such as NFC and IO-Link with their diverse functionality increase the level of automation and thereby productivity. The result: Simple on-site diagnostics, fast commissioning, and comprehensive data for automating downstream processes. Furthermore, the flexible connection concept in combination with the uniform housing design ensures low cabling, installation and configuration costs. The required functions are activated without software via the matching system plug. Thanks to different enclosure ratings as well as variants for explosion-hazardous areas, deTec also provides solutions for applications in harsh environments.

## At a glance

- NFC diagnosis and smartphone app
- Diagnostics and automation via IO-Link
- Object pattern recognition using Smart Box Detection
- 2-signal muting
- Smart presence detection
- Configuration of all functions without software
- Reduced resolution: 1 or 2 beams
- Different enclosure ratings as well as variants for use in explosion-hazardous areas

## Your benefits

- Benefit from a productivity boost and short downtimes thanks to the innovative diagnostic options
- Increase the level of automation and process transparency of your systems with IO-Link
- The reliable object pattern recognition without external signals or devices ensures a cost-effective and compact machine design
- Muting offers productivity and safety in human-material differentiation
- High availability: smart presence detection prevents unwanted switch-offs
- Easy commissioning and configuration without the need for software saves you time and money

## Fields of application

- Automotive and parts suppliers
- Machine tools industry
- Storage and conveyor technology
- Consumer goods industry
- Packaging industry
- Plastics and rubber industry
- Food and beverage industry
- Paint booths
- Chemical applications
- Dusty environments

## Ordering information

Other models and accessories → [www.sick.com/deTec](http://www.sick.com/deTec)

### System plugs for deTec4, deTec4 HG, deTec4 Ex II 3GD

Functions	System connection	Extension connection	Type	Part no.
SP1	Male connector M12, 5-pin	Without extension connection	1000	2076832
		Female connector M12, 5-pin (RES, EDM, ADO, IO-Link, cascading)	1100	2076833
	Male connector M12, 8-pin (RES, EDM, ADO)	Without extension connection	1200	2076834
		Female connector M12, 5-pin (RES, EDM, ADO, IO-Link, cascading)	1300	2076835
SP2	Male connector M12, 5-pin	Without extension connection	2000	2093097
		Female connector M12, 5-pin (RES, EDM, ADO, IO-Link, cascading, smart presence detection, muting)	2100	2093098
	Male connector M12, 8-pin (RES, EDM, ADO)	Without extension connection	2200	2093099
	Male connector M12, 8-pin (RES, EDM, ADO, muting)	Female connector M12, 5-pin (RES, EDM, ADO, IO-Link, cascading, smart presence detection, muting)	2300	2093100

deTec4: sender with normal scanning range / receiver without LED indicator lamp

- **Application:** normal industrial environment
- **Safety level:** PL e, SIL 3, Type 4
- **Function range:** deTec4 (protective operation, beam coding, restart interlock, external device monitoring (EDM), chain, smart presence detection, reduced resolution, 2-signal muting, dynamic protective field width in normal operation, integrated laser alignment aid)
- **Connection type:** depending on system plug (M12 male connector, 5-pin or 8-pin)
- **Enclosure rating:** IP65, IP67
- **Note:** Scope of delivery of sender and receiver without system plug. The system plugs must be ordered separately. For details, see "Accessories".

Resolution	Scanning range	Protective field height	Sender		Receiver	
			Type	Part no.	Type	Part no.
14 mm	20 m	300 mm	C4P-SA03011A00	1220084	C4P-EA03011C00	1220097
		450 mm	C4P-SA04511A00	1220085	C4P-EA04511C00	1220098
		600 mm	C4P-SA06011A00	1220086	C4P-EA06011C00	1220099
		750 mm	C4P-SA07511A00	1220087	C4P-EA07511C00	1220100
		900 mm	C4P-SA09011A00	1220088	C4P-EA09011C00	1220101
		1,050 mm	C4P-SA10511A00	1220089	C4P-EA10511C00	1220102
		1,200 mm	C4P-SA12011A00	1220090	C4P-EA12011C00	1220103
		1,350 mm	C4P-SA13511A00	1220091	C4P-EA13511C00	1220104
		1,500 mm	C4P-SA15011A00	1220092	C4P-EA15011C00	1220105
		1,650 mm	C4P-SA16511A00	1220093	C4P-EA16511C00	1220106
		1,800 mm	C4P-SA18011A00	1220094	C4P-EA18011C00	1220121
		1,950 mm	C4P-SA19511A00	1220095	C4P-EA19511C00	1220107
		2,100 mm	C4P-SA21011A00	1220096	C4P-EA21011C00	1220108
30 mm	30 m	300 mm	C4P-SA03031A00	1220123	C4P-EA03031C00	1220137
		450 mm	C4P-SA04531A00	1220124	C4P-EA04531C00	1220138
		600 mm	C4P-SA06031A00	1220125	C4P-EA06031C00	1220139
		750 mm	C4P-SA07531A00	1220126	C4P-EA07531C00	1220140
		900 mm	C4P-SA09031A00	1220127	C4P-EA09031C00	1220141
		1,050 mm	C4P-SA10531A00	1220128	C4P-EA10531C00	1220142
		1,200 mm	C4P-SA12031A00	1220129	C4P-EA12031C00	1220143
		1,350 mm	C4P-SA13531A00	1220130	C4P-EA13531C00	1220144
		1,500 mm	C4P-SA15031A00	1220131	C4P-EA15031C00	1220145
		1,650 mm	C4P-SA16531A00	1220132	C4P-EA16531C00	1220146
		1,800 mm	C4P-SA18031A00	1220134	C4P-EA18031C00	1220147
		1,950 mm	C4P-SA19531A00	1220135	C4P-EA19531C00	1220148
		2,100 mm	C4P-SA21031A00	1220136	C4P-EA21031C00	1220149

## deTec4: sender with normal scanning range / receiver with LED indicator lamp

- **Specialty:** receiver with integrated LED
- **Application:** normal industrial environment
- **Safety level:** PL e, SIL 3, Type 4
- **Function range:** deTec4 (protective operation, beam coding, restart interlock, external device monitoring (EDM), chain, smart presence detection, reduced resolution, 2-signal muting, dynamic protective field width in normal operation, integrated laser alignment aid)
- **Connection type:** depending on system plug (M12 male connector, 5-pin or 8-pin)
- **Enclosure rating:** IP65, IP67
- **Note:** Scope of delivery of sender and receiver without system plug. The system plugs must be ordered separately. For details, see "Accessories".

Resolution	Scanning range	Protective field height	Sender		Receiver	
			Type	Part no.	Type	Part no.
14 mm	20 m	300 mm	C4P-SA03011A00	1220084	C4P-EA03011D00	1220109
		450 mm	C4P-SA04511A00	1220085	C4P-EA04511D00	1220110
		600 mm	C4P-SA06011A00	1220086	C4P-EA06011D00	1220111
		750 mm	C4P-SA07511A00	1220087	C4P-EA07511D00	1220112
		900 mm	C4P-SA09011A00	1220088	C4P-EA09011D00	1220113
		1,050 mm	C4P-SA10511A00	1220089	C4P-EA10511D00	1220114
		1,200 mm	C4P-SA12011A00	1220090	C4P-EA12011D00	1220115
		1,350 mm	C4P-SA13511A00	1220091	C4P-EA13511D00	1220116
		1,500 mm	C4P-SA15011A00	1220092	C4P-EA15011D00	1220117
		1,650 mm	C4P-SA16511A00	1220093	C4P-EA16511D00	1220118
		1,800 mm	C4P-SA18011A00	1220094	C4P-EA18011D00	1220122
		1,950 mm	C4P-SA19511A00	1220095	C4P-EA19511D00	1220119
		2,100 mm	C4P-SA21011A00	1220096	C4P-EA21011D00	1220120
30 mm	30 m	300 mm	C4P-SA03031A00	1220123	C4P-EA03031D00	1220150
		450 mm	C4P-SA04531A00	1220124	C4P-EA04531D00	1220151
		600 mm	C4P-SA06031A00	1220125	C4P-EA06031D00	1220152
		750 mm	C4P-SA07531A00	1220126	C4P-EA07531D00	1220153
		900 mm	C4P-SA09031A00	1220127	C4P-EA09031D00	1220154
		1,050 mm	C4P-SA10531A00	1220128	C4P-EA10531D00	1220155
		1,200 mm	C4P-SA12031A00	1220129	C4P-EA12031D00	1220156
		1,350 mm	C4P-SA13531A00	1220130	C4P-EA13531D00	1220157
		1,500 mm	C4P-SA15031A00	1220131	C4P-EA15031D00	1220158
		1,650 mm	C4P-SA16531A00	1220132	C4P-EA16531D00	1220159
		1,800 mm	C4P-SA18031A00	1220134	C4P-EA18031D00	1220160
		1,950 mm	C4P-SA19531A00	1220135	C4P-EA19531D00	1220161
		2,100 mm	C4P-SA21031A00	1220136	C4P-EA21031D00	1220162

deTec4: sender with reduced scanning range / receiver without LED indicator lamp

- **Specialty:** sender with reduced scanning range (for preventing mutual interference of multiple deTec safety light curtains)
- **Application:** normal industrial environment
- **Safety level:** PL e, SIL 3, Type 4
- **Function range:** deTec4 (protective operation, beam coding, restart interlock, external device monitoring (EDM), chain, smart presence detection, reduced resolution, 2-signal muting, dynamic protective field width in normal operation, integrated laser alignment aid)
- **Connection type:** depending on system plug (M12 male connector, 5-pin or 8-pin)
- **Enclosure rating:** IP65, IP67
- **Note:** Scope of delivery of sender and receiver without system plug. The system plugs must be ordered separately. For details, see "Accessories".

Resolution	Scanning range	Protective field height	Sender		Receiver	
			Type	Part no.	Type	Part no.
14 mm	2.5 m	300 mm	C4P-SA03011C00	1220639	C4P-EA03011C00	1220097
		450 mm	C4P-SA04511C00	1220640	C4P-EA04511C00	1220098
		600 mm	C4P-SA06011C00	1220641	C4P-EA06011C00	1220099
		750 mm	C4P-SA07511C00	1220642	C4P-EA07511C00	1220100
		900 mm	C4P-SA09011C00	1220643	C4P-EA09011C00	1220101
		1,050 mm	C4P-SA10511C00	1220644	C4P-EA10511C00	1220102
		1,200 mm	C4P-SA12011C00	1220645	C4P-EA12011C00	1220103
		1,350 mm	C4P-SA13511C00	1220646	C4P-EA13511C00	1220104
		1,500 mm	C4P-SA15011C00	1220647	C4P-EA15011C00	1220105
		1,650 mm	C4P-SA16511C00	1220648	C4P-EA16511C00	1220106
		1,800 mm	C4P-SA18011C00	1220649	C4P-EA18011C00	1220121
		1,950 mm	C4P-SA19511C00	1220650	C4P-EA19511C00	1220107
		2,100 mm	C4P-SA21011C00	1220651	C4P-EA21011C00	1220108

## deTec4: sender with reduced scanning range / receiver with LED indicator lamp

- **Specialty:** sender with reduced scanning range (for preventing mutual interference of multiple deTec safety light curtains), receiver with integrated LED
- **Application:** normal industrial environment
- **Safety level:** PL e, SIL 3, Type 4
- **Function range:** deTec4 (protective operation, beam coding, restart interlock, external device monitoring (EDM), chain, smart presence detection, reduced resolution, 2-signal muting, dynamic protective field width in normal operation, integrated laser alignment aid)
- **Connection type:** depending on system plug (M12 male connector, 5-pin or 8-pin)
- **Enclosure rating:** IP65, IP67
- **Note:** Scope of delivery of sender and receiver without system plug. The system plugs must be ordered separately. For details, see "Accessories".

Resolution	Scanning range	Protective field height	Sender		Receiver	
			Type	Part no.	Type	Part no.
14 mm	2.5 m	300 mm	C4P-SA03011C00	1220639	C4P-EA03011D00	1220109
		450 mm	C4P-SA04511C00	1220640	C4P-EA04511D00	1220110
		600 mm	C4P-SA06011C00	1220641	C4P-EA06011D00	1220111
		750 mm	C4P-SA07511C00	1220642	C4P-EA07511D00	1220112
		900 mm	C4P-SA09011C00	1220643	C4P-EA09011D00	1220113
		1,050 mm	C4P-SA10511C00	1220644	C4P-EA10511D00	1220114
		1,200 mm	C4P-SA12011C00	1220645	C4P-EA12011D00	1220115
		1,350 mm	C4P-SA13511C00	1220646	C4P-EA13511D00	1220116
		1,500 mm	C4P-SA15011C00	1220647	C4P-EA15011D00	1220117
		1,650 mm	C4P-SA16511C00	1220648	C4P-EA16511D00	1220118
		1,800 mm	C4P-SA18011C00	1220649	C4P-EA18011D00	1220122
		1,950 mm	C4P-SA19511C00	1220650	C4P-EA19511D00	1220119
		2,100 mm	C4P-SA21011C00	1220651	C4P-EA21011D00	1220120

deTec4 Core

- **Application:** normal industrial environment
- **Safety level:** PL e, SIL 3, Type 4
- **Function range:** deTec Core (protective operation)
- **Connection type:** male connector M12, 5-pin
- **Enclosure rating:** IP65, IP67

Resolution	Scanning range	Protective field height	Sender		Receiver	
			Type	Part no.	Type	Part no.
14 mm	10 m	300 mm	C4C-SA03010A10000	1211450	C4C-EA03010A10000	1211463
		450 mm	C4C-SA04510A10000	1211469	C4C-EA04510A10000	1211470
		600 mm	C4C-SA06010A10000	1211471	C4C-EA06010A10000	1211472
		750 mm	C4C-SA07510A10000	1211473	C4C-EA07510A10000	1211474
		900 mm	C4C-SA09010A10000	1211475	C4C-EA09010A10000	1211515
		1,050 mm	C4C-SA10510A10000	1211476	C4C-EA10510A10000	1211477
		1,200 mm	C4C-SA12010A10000	1211478	C4C-EA12010A10000	1211479
		1,350 mm	C4C-SA13510A10000	1211480	C4C-EA13510A10000	1211481
		1,500 mm	C4C-SA15010A10000	1211482	C4C-EA15010A10000	1211483
		1,650 mm	C4C-SA16510A10000	1211484	C4C-EA16510A10000	1211485
		1,800 mm	C4C-SA18010A10000	1211486	C4C-EA18010A10000	1211487
		1,950 mm	C4C-SA19510A10000	1211488	C4C-EA19510A10000	1211489
		2,100 mm	C4C-SA21010A10000	1211490	C4C-EA21010A10000	1211491
30 mm	15 m	300 mm	C4C-SA03030A10000	1211462	C4C-EA03030A10000	1211464
		450 mm	C4C-SA04530A10000	1211492	C4C-EA04530A10000	1211493
		600 mm	C4C-SA06030A10000	1211494	C4C-EA06030A10000	1211495
		750 mm	C4C-SA07530A10000	1211496	C4C-EA07530A10000	1211497
		900 mm	C4C-SA09030A10000	1211498	C4C-EA09030A10000	1211516
		1,050 mm	C4C-SA10530A10000	1211499	C4C-EA10530A10000	1211500
		1,200 mm	C4C-SA12030A10000	1211501	C4C-EA12030A10000	1211502
		1,350 mm	C4C-SA13530A10000	1211503	C4C-EA13530A10000	1211504
		1,500 mm	C4C-SA15030A10000	1211505	C4C-EA15030A10000	1211506
		1,650 mm	C4C-SA16530A10000	1211507	C4C-EA16530A10000	1211508
		1,800 mm	C4C-SA18030A10000	1211509	C4C-EA18030A10000	1211510
		1,950 mm	C4C-SA19530A10000	1211511	C4C-EA19530A10000	1211512
		2,100 mm	C4C-SA21030A10000	1211513	C4C-EA21030A10000	1211514

## deTec2 Core

- **Application:** normal industrial environment
- **Safety level:** PL c, SIL 1, Type 2
- **Function range:** deTec Core (protective operation)
- **Connection type:** male connector M12, 5-pin
- **Enclosure rating:** IP65, IP67

Resolution	Scanning range	Protective field height	Sender		Receiver	
			Type	Part no.	Type	Part no.
14 mm	10 m	300 mm	C2C-SA03010A10000	1213163	C2C-EA03010A10000	1213188
		450 mm	C2C-SA04510A10000	1213189	C2C-EA04510A10000	1213190
		600 mm	C2C-SA06010A10000	1213191	C2C-EA06010A10000	1213192
		750 mm	C2C-SA07510A10000	1213193	C2C-EA07510A10000	1213194
		900 mm	C2C-SA09010A10000	1213195	C2C-EA09010A10000	1213196
		1,050 mm	C2C-SA10510A10000	1213197	C2C-EA10510A10000	1213198
		1,200 mm	C2C-SA12010A10000	1213183	C2C-EA12010A10000	1213199
		1,350 mm	C2C-SA13510A10000	1215643	C2C-EA13510A10000	1216120
		1,500 mm	C2C-SA15010A10000	1216121	C2C-EA15010A10000	1216122
		1,650 mm	C2C-SA16510A10000	1216123	C2C-EA16510A10000	1216124
		1,800 mm	C2C-SA18010A10000	1216125	C2C-EA18010A10000	1216126
		1,950 mm	C2C-SA19510A10000	1216127	C2C-EA19510A10000	1216128
		2,100 mm	C2C-SA21010A10000	1216129	C2C-EA21010A10000	1216130
30 mm	15 m	300 mm	C2C-SA03030A10000	1213200	C2C-EA03030A10000	1213184
		450 mm	C2C-SA04530A10000	1213202	C2C-EA04530A10000	1213203
		600 mm	C2C-SA06030A10000	1213204	C2C-EA06030A10000	1213205
		750 mm	C2C-SA07530A10000	1213206	C2C-EA07530A10000	1213207
		900 mm	C2C-SA09030A10000	1213208	C2C-EA09030A10000	1213209
		1,050 mm	C2C-SA10530A10000	1213210	C2C-EA10530A10000	1213211
		1,200 mm	C2C-SA12030A10000	1213212	C2C-EA12030A10000	1213213
		1,350 mm	C2C-SA13530A10000	1213214	C2C-EA13530A10000	1213215
		1,500 mm	C2C-SA15030A10000	1213216	C2C-EA15030A10000	1213217
		1,650 mm	C2C-SA16530A10000	1213218	C2C-EA16530A10000	1213219
		1,800 mm	C2C-SA18030A10000	1213220	C2C-EA18030A10000	1213221
		1,950 mm	C2C-SA19530A10000	1213222	C2C-EA19530A10000	1213223
		2,100 mm	C2C-SA21030A10000	1213201	C2C-EA21030A10000	1213164

## deTec4 HG: sender with normal scanning range / receiver without LED indicator lamp

- **Application:** Areas where coolants, lubricants and cleaning agents are used
- **Safety level:** PL e, SIL 3, Type 4
- **Function range:** deTec4 (protective operation, beam coding, restart interlock, external device monitoring (EDM), chain, smart presence detection, reduced resolution, 2-signal muting, dynamic protective field width in normal operation, integrated laser alignment aid)
- **Connection type:** depending on system plug (M12 male connector, 5-pin or 8-pin)
- **Enclosure rating:** IP65, IP67
- **Note:** Scope of delivery of sender and receiver without system plug. The system plugs must be ordered separately. For details, see "Accessories".

Resolution	Scanning range	Protective field height	Sender		Receiver	
			Type	Part no.	Type	Part no.
14 mm	20 m	300 mm	C4P-SG03011A00	1222441	C4P-EG03011C00	1222453
		450 mm	C4P-SG04511A00	1112497	C4P-EG04511C00	On request
		600 mm	C4P-SG06011A00	1125582	C4P-EG06011C00	1125581
		750 mm	C4P-SG07511A00	1222442	C4P-EG07511C00	1222452
		900 mm	C4P-SG09011A00	1222906	C4P-EG09011C00	1222907
		1,050 mm	C4P-SG10511A00	1223238	C4P-EG10511C00	1223237
		1,200 mm	C4P-SG12011A00	1105568	C4P-EG12011C00	1105567
		1,350 mm	C4P-SG13511A00	On request	C4P-EG13511C00	On request
		1,500 mm	C4P-SG15011A00	1222443	C4P-EG15011C00	1222454
		1,650 mm	C4P-SG16511A00	On request	C4P-EG16511C00	On request
		1,800 mm	C4P-SG18011A00	1222444	C4P-EG18011C00	1222455
		1,950 mm	C4P-SG19511A00	On request	C4P-EG19511C00	On request
		2,100 mm	C4P-SG21011A00	On request	C4P-EG21011C00	On request
30 mm	30 m	300 mm	C4P-SG03031A00	1222445	C4P-EG03031C00	1222456
		450 mm	C4P-SG04531A00	1222446	C4P-EG04531C00	1222457
		600 mm	C4P-SG06031A00	1106989	C4P-EG06031C00	1106991
		750 mm	C4P-SG07531A00	1105562	C4P-EG07531C00	1105564
		900 mm	C4P-SG09031A00	On request	C4P-EG09031C00	On request
		1,050 mm	C4P-SG10531A00	1134549	C4P-EG10531C00	On request
		1,200 mm	C4P-SG12031A00	1105565	C4P-EG12031C00	1105566
		1,350 mm	C4P-SG13531A00	1223140	C4P-EG13531C00	1223139
		1,500 mm	C4P-SG15031A00	1109330	C4P-EG15031C00	1109331
		1,650 mm	C4P-SG16531A00	1223025	C4P-EG16531C00	On request
		1,800 mm	C4P-SG18031A00	1106360	C4P-EG18031C00	1114386
		1,950 mm	C4P-SG19531A00	On request	C4P-EG19531C00	On request
		2,100 mm	C4P-SG21031A00	On request	C4P-EG21031C00	On request

## deTec4 HG: sender with normal scanning range / receiver with integrated LED indicator lamp

- **Specialty:** receiver with integrated LED
- **Application:** Areas where coolants, lubricants and cleaning agents are used
- **Safety level:** PL e, SIL 3, Type 4
- **Function range:** deTec4 (protective operation, beam coding, restart interlock, external device monitoring (EDM), chain, smart presence detection, reduced resolution, 2-signal muting, dynamic protective field width in normal operation, integrated laser alignment aid)
- **Connection type:** depending on system plug (M12 male connector, 5-pin or 8-pin)
- **Enclosure rating:** IP65, IP67
- **Note:** Scope of delivery of sender and receiver without system plug. The system plugs must be ordered separately. For details, see "Accessories".

Resolution	Scanning range	Protective field height	Sender		Receiver	
			Type	Part no.	Type	Part no.
14 mm	20 m	300 mm	C4P-SG03011A00	1222441	C4P-EG03011D00	On request
		450 mm	C4P-SG04511A00	1112497	C4P-EG04511D00	1112498
		600 mm	C4P-SG06011A00	1125582	C4P-EG06011D00	1140210
		750 mm	C4P-SG07511A00	1222442	C4P-EG07511D00	On request
		900 mm	C4P-SG09011A00	1222906	C4P-EG09011D00	On request
		1,050 mm	C4P-SG10511A00	1223238	C4P-EG10511D00	1106528
		1,200 mm	C4P-SG12011A00	1105568	C4P-EG12011D00	On request
		1,350 mm	C4P-SG13511A00	On request	C4P-EG13511D00	On request
		1,500 mm	C4P-SG15011A00	1222443	C4P-EG15011D00	On request
		1,650 mm	C4P-SG16511A00	On request	C4P-EG16511D00	On request
		1,800 mm	C4P-SG18011A00	1222444	C4P-EG18011D00	1128293
		1,950 mm	C4P-SG19511A00	On request	C4P-EG19511D00	On request
		2,100 mm	C4P-SG21011A00	On request	C4P-EG21011D00	On request
30 mm	30 m	300 mm	C4P-SG03031A00	1222445	C4P-EG03031D00	1222458
		450 mm	C4P-SG04531A00	1222446	C4P-EG04531D00	On request
		600 mm	C4P-SG06031A00	1106989	C4P-EG06031D00	On request
		750 mm	C4P-SG07531A00	1105562	C4P-EG07531D00	On request
		900 mm	C4P-SG09031A00	On request	C4P-EG09031D00	On request
		1,050 mm	C4P-SG10531A00	1134549	C4P-EG10531D00	1134548
		1,200 mm	C4P-SG12031A00	1105565	C4P-EG12031D00	1140259
		1,350 mm	C4P-SG13531A00	1223140	C4P-EG13531D00	On request
		1,500 mm	C4P-SG15031A00	1109330	C4P-EG15031D00	1109332
		1,650 mm	C4P-SG16531A00	1223025	C4P-EG16531D00	1223026
		1,800 mm	C4P-SG18031A00	1106360	C4P-EG18031D00	1106353
		1,950 mm	C4P-SG19531A00	On request	C4P-EG19531D00	On request
		2,100 mm	C4P-SG21031A00	On request	C4P-EG21031D00	On request

deTec4 HG: sender with reduced scanning range / receiver without LED indicator lamp

- **Specialty:** sender with reduced scanning range (for preventing mutual interference of multiple deTec safety light curtains)
- **Application:** Areas where coolants, lubricants and cleaning agents are used
- **Safety level:** PL e, SIL 3, Type 4
- **Function range:** deTec4 (protective operation, beam coding, restart interlock, external device monitoring (EDM), chain, smart presence detection, reduced resolution, 2-signal muting, dynamic protective field width in normal operation, integrated laser alignment aid)
- **Connection type:** depending on system plug (M12 male connector, 5-pin or 8-pin)
- **Enclosure rating:** IP65, IP67
- **Note:** Scope of delivery of sender and receiver without system plug. The system plugs must be ordered separately. For details, see "Accessories".

Resolution	Scanning range	Protective field height	Sender		Receiver	
			Type	Part no.	Type	Part no.
14 mm	2.5 m	300 mm	C4P-SG03011C00	1126228	C4P-EG03011C00	1222453
		450 mm	C4P-SG04511C00	1118535	C4P-EG04511C00	On request
		600 mm	C4P-SG06011C00	On request	C4P-EG06011C00	1125581
		750 mm	C4P-SG07511C00	On request	C4P-EG07511C00	1222452
		900 mm	C4P-SG09011C00	On request	C4P-EG09011C00	1222907
		1,050 mm	C4P-SG10511C00	1126227	C4P-EG10511C00	1223237
		1,200 mm	C4P-SG12011C00	On request	C4P-EG12011C00	1105567
		1,350 mm	C4P-SG13511C00	On request	C4P-EG13511C00	On request
		1,500 mm	C4P-SG15011C00	On request	C4P-EG15011C00	1222454
		1,650 mm	C4P-SG16511C00	On request	C4P-EG16511C00	On request
		1,800 mm	C4P-SG18011C00	On request	C4P-EG18011C00	1222455
		1,950 mm	C4P-SG19511C00	On request	C4P-EG19511C00	On request
		2,100 mm	C4P-SG21011C00	On request	C4P-EG21011C00	On request

## deTec4 HG: sender with reduced scanning range / receiver with integrated LED indicator lamp

- **Specialty:** sender with reduced scanning range (for preventing mutual interference of multiple deTec safety light curtains), receiver with integrated LED
- **Application:** Areas where coolants, lubricants and cleaning agents are used
- **Safety level:** PL e, SIL 3, Type 4
- **Function range:** deTec4 (protective operation, beam coding, restart interlock, external device monitoring (EDM), chain, smart presence detection, reduced resolution, 2-signal muting, dynamic protective field width in normal operation, integrated laser alignment aid)
- **Connection type:** depending on system plug (M12 male connector, 5-pin or 8-pin)
- **Enclosure rating:** IP65, IP67
- **Note:** Scope of delivery of sender and receiver without system plug. The system plugs must be ordered separately. For details, see "Accessories".

Resolution	Scanning range	Protective field height	Sender		Receiver	
			Type	Part no.	Type	Part no.
14 mm	2.5 m	300 mm	C4P-SG03011C00	1126228	C4P-EG03011D00	On request
		450 mm	C4P-SG04511C00	1118535	C4P-EG04511D00	1112498
		600 mm	C4P-SG06011C00	On request	C4P-EG06011D00	1140210
		750 mm	C4P-SG07511C00	On request	C4P-EG07511D00	On request
		900 mm	C4P-SG09011C00	On request	C4P-EG09011D00	On request
		1,050 mm	C4P-SG10511C00	1126227	C4P-EG10511D00	1106528
		1,200 mm	C4P-SG12011C00	On request	C4P-EG12011D00	On request
		1,350 mm	C4P-SG13511C00	On request	C4P-EG13511D00	On request
		1,500 mm	C4P-SG15011C00	On request	C4P-EG15011D00	On request
		1,650 mm	C4P-SG16511C00	On request	C4P-EG16511D00	On request
		1,800 mm	C4P-SG18011C00	On request	C4P-EG18011D00	1128293
		1,950 mm	C4P-SG19511C00	On request	C4P-EG19511D00	On request
		2,100 mm	C4P-SG21011C00	On request	C4P-EG21011D00	On request

deTec4 Core HG

- **Application:** Areas where coolants, lubricants and cleaning agents are used
- **Safety level:** PL e, SIL 3, Type 4
- **Function range:** deTec Core (protective operation)
- **Connection type:** male connector M12, 5-pin
- **Enclosure rating:** IP65, IP67

Resolution	Scanning range	Protective field height	Sender		Receiver	
			Type	Part no.	Type	Part no.
14 mm	10 m	300 mm	C4C-SG03010A10000	1220365	C4C-EG03010A10000	1220376
		450 mm	C4C-SG04510A10000	1220366	C4C-EG04510A10000	1220377
		600 mm	C4C-SG06010A10000	1220367	C4C-EG06010A10000	1220378
		750 mm	C4C-SG07510A10000	1220368	C4C-EG07510A10000	1220379
		900 mm	C4C-SG09010A10000	1220369	C4C-EG09010A10000	1220380
		1,050 mm	C4C-SG10510A10000	1220370	C4C-EG10510A10000	1220381
		1,200 mm	C4C-SG12010A10000	1220371	C4C-EG12010A10000	1220382
		1,350 mm	C4C-SG13510A10000	1220372	C4C-EG13510A10000	1220383
		1,500 mm	C4C-SG15010A10000	1220373	C4C-EG15010A10000	1220384
		1,650 mm	C4C-SG16510A10000	1220374	C4C-EG16510A10000	1220385
		1,800 mm	C4C-SG18010A10000	1220375	C4C-EG18010A10000	1220386
		1,950 mm	C4C-SG19510A10000	1221094	C4C-EG19510A10000	1221095
		2,100 mm	C4C-SG21010A10000	1221102	C4C-EG21010A10000	1221103
		30 mm	15 m	300 mm	C4C-SG03030A10000	1220387
450 mm	C4C-SG04530A10000			1220388	C4C-EG04530A10000	1220399
600 mm	C4C-SG06030A10000			1220389	C4C-EG06030A10000	1220400
750 mm	C4C-SG07530A10000			1220390	C4C-EG07530A10000	1220401
900 mm	C4C-SG09030A10000			1220391	C4C-EG09030A10000	1220402
1,050 mm	C4C-SG10530A10000			1220392	C4C-EG10530A10000	1220403
1,200 mm	C4C-SG12030A10000			1220393	C4C-EG12030A10000	1220404
1,350 mm	C4C-SG13530A10000			1220394	C4C-EG13530A10000	1220405
1,500 mm	C4C-SG15030A10000			1220395	C4C-EG15030A10000	1220406
1,650 mm	C4C-SG16530A10000			1220396	C4C-EG16530A10000	1220407
1,800 mm	C4C-SG18030A10000			1220397	C4C-EG18030A10000	1220408
1,950 mm	C4C-SG19530A10000			1221096	C4C-EG19530A10000	1221097
2,100 mm	C4C-SG21030A10000			1221104	C4C-EG21030A10000	1221105

## deTec2 Core HG

- **Application:** Areas where coolants, lubricants and cleaning agents are used
- **Safety level:** PL c, SIL 1, Type 2
- **Function range:** deTec Core (protective operation)
- **Connection type:** male connector M12, 5-pin
- **Enclosure rating:** IP65, IP67

Resolution	Scanning range	Protective field height	Sender		Receiver	
			Type	Part no.	Type	Part no.
14 mm	10 m	300 mm	C2C-SG03010A10000	1220489	C2C-EG03010A10000	1220500
		450 mm	C2C-SG04510A10000	1220490	C2C-EG04510A10000	1220501
		600 mm	C2C-SG06010A10000	1220491	C2C-EG06010A10000	1220502
		750 mm	C2C-SG07510A10000	1220492	C2C-EG07510A10000	1220503
		900 mm	C2C-SG09010A10000	1220493	C2C-EG09010A10000	1220504
		1,050 mm	C2C-SG10510A10000	1220494	C2C-EG10510A10000	1220505
		1,200 mm	C2C-SG12010A10000	1220495	C2C-EG12010A10000	1220506
		1,350 mm	C2C-SG13510A10000	1220496	C2C-EG13510A10000	1220507
		1,500 mm	C2C-SG15010A10000	1220497	C2C-EG15010A10000	1220508
		1,650 mm	C2C-SG16510A10000	1220498	C2C-EG16510A10000	1220509
		1,800 mm	C2C-SG18010A10000	1220499	C2C-EG18010A10000	1220510
		1,950 mm	C2C-SG19510A10000	1221098	C2C-EG19510A10000	1221099
		2,100 mm	C2C-SG21010A10000	1221106	C2C-EG21010A10000	1221107
30 mm	15 m	300 mm	C2C-SG03030A10000	1220511	C2C-EG03030A10000	1220522
		450 mm	C2C-SG04530A10000	1220512	C2C-EG04530A10000	1220523
		600 mm	C2C-SG06030A10000	1220513	C2C-EG06030A10000	1220524
		750 mm	C2C-SG07530A10000	1220514	C2C-EG07530A10000	1220525
		900 mm	C2C-SG09030A10000	1220515	C2C-EG09030A10000	1220526
		1,050 mm	C2C-SG10530A10000	1220516	C2C-EG10530A10000	1220527
		1,200 mm	C2C-SG12030A10000	1220517	C2C-EG12030A10000	1220528
		1,350 mm	C2C-SG13530A10000	1220518	C2C-EG13530A10000	1220529
		1,500 mm	C2C-SG15030A10000	1220519	C2C-EG15030A10000	1220530
		1,650 mm	C2C-SG16530A10000	1220520	C2C-EG16530A10000	1220531
		1,800 mm	C2C-SG18030A10000	1220521	C2C-EG18030A10000	1220532
		1,950 mm	C2C-SG19530A10000	1221100	C2C-EG19530A10000	1221101
		2,100 mm	C2C-SG21030A10000	1221108	C2C-EG21030A10000	1221109

deTec4 Core IP69K

- **Application:** Areas with special hygiene requirements
- **Safety level:** PL e, SIL 3, Type 4
- **Function range:** deTec Core (protective operation)
- **Connection type:** Connecting cable, 15 m, flying leads, 5-wire
- **Enclosure rating:** IP65, IP66, IP67, IP69K
- **Note:** completely pre-installed including connecting cable, 15 m, flying lead, 5-wire

Resolution	Scanning range	Protective field height	Sender		Receiver	
			Type	Part no.	Type	Part no.
14 mm	8.5 m	300 mm	C4C-SB03010A10000	1219531	C4C-EB03010A10000	1219058
		450 mm	C4C-SB04510A10000	1219532	C4C-EB04510A10000	1219533
		600 mm	C4C-SB06010A10000	1219534	C4C-EB06010A10000	1219535
		750 mm	C4C-SB07510A10000	1219536	C4C-EB07510A10000	1219537
		900 mm	C4C-SB09010A10000	1219538	C4C-EB09010A10000	1219539
		1,050 mm	C4C-SB10510A10000	1219540	C4C-EB10510A10000	1219541
		1,200 mm	C4C-SB12010A10000	1219542	C4C-EB12010A10000	1219543
		1,350 mm	C4C-SB13510A10000	1219544	C4C-EB13510A10000	1219545
		1,500 mm	C4C-SB15010A10000	1219546	C4C-EB15010A10000	1219547
		1,650 mm	C4C-SB16510A10000	1219548	C4C-EB16510A10000	1219549
		1,800 mm	C4C-SB18010A10000	1219550	C4C-EB18010A10000	1219551
30 mm	12.5 m	300 mm	C4C-SB03030A10000	1219552	C4C-EB03030A10000	1219553
		450 mm	C4C-SB04530A10000	1219554	C4C-EB04530A10000	1219555
		600 mm	C4C-SB06030A10000	1219556	C4C-EB06030A10000	1219557
		750 mm	C4C-SB07530A10000	1219558	C4C-EB07530A10000	1219559
		900 mm	C4C-SB09030A10000	1219560	C4C-EB09030A10000	1219561
		1,050 mm	C4C-SB10530A10000	1219562	C4C-EB10530A10000	1219563
		1,200 mm	C4C-SB12030A10000	1219564	C4C-EB12030A10000	1219565
		1,350 mm	C4C-SB13530A10000	1219566	C4C-EB13530A10000	1219567
		1,500 mm	C4C-SB15030A10000	1219568	C4C-EB15030A10000	1219569
		1,650 mm	C4C-SB16530A10000	1219570	C4C-EB16530A10000	1219571
		1,800 mm	C4C-SB18030A10000	1219059	C4C-EB18030A10000	1219572

## deTec2 Core IP69K

- **Application:** Areas with special hygiene requirements
- **Safety level:** PL c, SIL 1, Type 2
- **Function range:** deTec Core (protective operation)
- **Connection type:** Connecting cable, 15 m, flying leads, 5-wire
- **Enclosure rating:** IP65, IP66, IP67, IP69K
- **Note:** completely pre-installed including connecting cable, 15 m, flying lead, 5-wire

Resolution	Scanning range	Protective field height	Sender		Receiver	
			Type	Part no.	Type	Part no.
30 mm	12.5 m	300 mm	C2C-SB03030A10000	1219509	C2C-EB03030A10000	1219510
		450 mm	C2C-SB04530A10000	1219511	C2C-EB04530A10000	1219512
		600 mm	C2C-SB06030A10000	1219513	C2C-EB06030A10000	1219514
		750 mm	C2C-SB07530A10000	1219515	C2C-EB07530A10000	1219516
		900 mm	C2C-SB09030A10000	1219517	C2C-EB09030A10000	1219518
		1,050 mm	C2C-SB10530A10000	1219519	C2C-EB10530A10000	1219520
		1,200 mm	C2C-SB12030A10000	1219521	C2C-EB12030A10000	1219522
		1,350 mm	C2C-SB13530A10000	1219523	C2C-EB13530A10000	1219524
		1,500 mm	C2C-SB15030A10000	1219525	C2C-EB15030A10000	1219526
		1,650 mm	C2C-SB16530A10000	1219527	C2C-EB16530A10000	1219528
		1,800 mm	C2C-SB18030A10000	1219529	C2C-EB18030A10000	1219530

deTec4 Ex II 3GD: Sender with normal sensing range/receiver without LED

- **Application:** Explosive areas
- **Safety level:** PL e, SIL 3, Type 4
- **Function range:** deTec4 (protective operation, beam coding, restart interlock, external device monitoring (EDM), chain, smart presence detection, reduced resolution, 2-signal muting, dynamic protective field width in normal operation, integrated laser alignment aid)
- **Connection type:** depending on system plug (M12 male connector, 5-pin or 8-pin)
- **Enclosure rating:** IP65
- **Ex-approvals:** ATEX for gas: II 3G Ex ec op is IIC T4 Gc, ATEX for dust: II 3D Ex tc IIIC T135 °C Dc
- **Note:** Scope of delivery of sender and receiver without system plug. The system plugs must be ordered separately. For details, see "Accessories".

Resolution	Scanning range	Protective field height	Sender		Receiver	
			Type	Part no.	Type	Part no.
14 mm	20 m	300 mm	C4P-SX03011A00	1222438	C4P-EX03011C00	1222449
		450 mm	C4P-SX04511A00	1121851	C4P-EX04511C00	1223312
		600 mm	C4P-SX06011A00	1222439	C4P-EX06011C00	1222450
		750 mm	C4P-SX07511A00	On request	C4P-EX07511C00	On request
		900 mm	C4P-SX09011A00	On request	C4P-EX09011C00	On request
		1,050 mm	C4P-SX10511A00	1109101	C4P-EX10511C00	1109102
		1,200 mm	C4P-SX12011A00	On request	C4P-EX12011C00	On request
		1,350 mm	C4P-SX13511A00	On request	C4P-EX13511C00	1108872
		1,500 mm	C4P-SX15011A00	1106518	C4P-EX15011C00	1106519
		1,650 mm	C4P-SX16511A00	On request	C4P-EX16511C00	On request
		1,800 mm	C4P-SX18011A00	1222440	C4P-EX18011C00	1222451
		1,950 mm	C4P-SX19511A00	1110108	C4P-EX19511C00	1110109
		2,100 mm	C4P-SX21011A00	1121852	C4P-EX21011C00	1121853
		30 mm	30 m	300 mm	C4P-SX03031A00	1222436
450 mm	C4P-SX04531A00			On request	C4P-EX04531C00	On request
600 mm	C4P-SX06031A00			1121034	C4P-EX06031C00	1121035
750 mm	C4P-SX07531A00			1108902	C4P-EX07531C00	1108903
900 mm	C4P-SX09031A00			1109390	C4P-EX09031C00	1109391
1,050 mm	C4P-SX10531A00			1108603	C4P-EX10531C00	1108605
1,200 mm	C4P-SX12031A00			1106057	C4P-EX12031C00	1106058
1,350 mm	C4P-SX13531A00			1106648	C4P-EX13531C00	1106649
1,500 mm	C4P-SX15031A00			1222437	C4P-EX15031C00	1222448
1,650 mm	C4P-SX16531A00			1121676	C4P-EX16531C00	1121677
1,800 mm	C4P-SX18031A00			1107868	C4P-EX18031C00	1107869
1,950 mm	C4P-SX19531A00			1134024	C4P-EX19531C00	1134025
2,100 mm	C4P-SX21031A00			1131070	C4P-EX21031C00	1131071

## deTec4 Ex II 3GD: Sender with small sensing range/receiver without LED

- **Application:** Explosive areas
- **Safety level:** PL e, SIL 3, Type 4
- **Function range:** deTec4 (protective operation, beam coding, restart interlock, external device monitoring (EDM), chain, smart presence detection, reduced resolution, 2-signal muting, dynamic protective field width in normal operation, integrated laser alignment aid)
- **Connection type:** depending on system plug (M12 male connector, 5-pin or 8-pin)
- **Enclosure rating:** IP65
- **Ex-approvals:** ATEX for gas: II 3G Ex ec op is IIC T4 Gc, ATEX for dust: II 3D Ex tc IIIC T135°C Dc
- **Note:** Scope of delivery of sender and receiver without system plug. The system plugs must be ordered separately. For details, see "Accessories".

Resolution	Scanning range	Protective field height	Sender		Receiver	
			Type	Part no.	Type	Part no.
14 mm	2.5 m	300 mm	C4P-SX03011C00	On request	C4P-EX03011C00	1222449
		450 mm	C4P-SX04511C00	1223311	C4P-EX04511C00	1223312
		600 mm	C4P-SX06011C00	1107679	C4P-EX06011C00	1222450
		750 mm	C4P-SX07511C00	On request	C4P-EX07511C00	On request
		900 mm	C4P-SX09011C00	On request	C4P-EX09011C00	On request
		1,050 mm	C4P-SX10511C00	On request	C4P-EX10511C00	1109102
		1,200 mm	C4P-SX12011C00	On request	C4P-EX12011C00	On request
		1,350 mm	C4P-SX13511C00	1108871	C4P-EX13511C00	1108872
		1,500 mm	C4P-SX15011C00	1132260	C4P-EX15011C00	1106519
		1,650 mm	C4P-SX16511C00	On request	C4P-EX16511C00	On request
		1,800 mm	C4P-SX18011C00	On request	C4P-EX18011C00	1222451
		1,950 mm	C4P-SX19511C00	On request	C4P-EX19511C00	1110109
		2,100 mm	C4P-SX21011C00	On request	C4P-EX21011C00	1121853

deTec4 Core Ex II 3GD

- **Application:** Explosive areas
- **Safety level:** PL e, SIL 3, Type 4
- **Function range:** deTec Core (protective operation)
- **Connection type:** male connector M12, 5-pin
- **Enclosure rating:** IP65, IP67
- **Ex-approvals:** ATEX for gas: II 3G Ex ec op is IIC T4 Gc, ATEX for dust: II 3D Ex tc IIIC T135 °C Dc

Resolution	Scanning range	Protective field height	Sender		Receiver	
			Type	Part no.	Type	Part no.
14 mm	10 m	300 mm	C4C-SX03010A10000	1220313	C4C-EX03010A10000	1220326
		450 mm	C4C-SX04510A10000	1220314	C4C-EX04510A10000	1220327
		600 mm	C4C-SX06010A10000	1220315	C4C-EX06010A10000	1220328
		750 mm	C4C-SX07510A10000	1220316	C4C-EX07510A10000	1220329
		900 mm	C4C-SX09010A10000	1220317	C4C-EX09010A10000	1220330
		1,050 mm	C4C-SX10510A10000	1220318	C4C-EX10510A10000	1220331
		1,200 mm	C4C-SX12010A10000	1220319	C4C-EX12010A10000	1220332
		1,350 mm	C4C-SX13510A10000	1220320	C4C-EX13510A10000	1220333
		1,500 mm	C4C-SX15010A10000	1220321	C4C-EX15010A10000	1220334
		1,650 mm	C4C-SX16510A10000	1220322	C4C-EX16510A10000	1220335
		1,800 mm	C4C-SX18010A10000	1220323	C4C-EX18010A10000	1220336
		1,950 mm	C4C-SX19510A10000	1220324	C4C-EX19510A10000	1220337
		2,100 mm	C4C-SX21010A10000	1220325	C4C-EX21010A10000	1220338
		30 mm	15 m	300 mm	C4C-SX03030A10000	1220339
450 mm	C4C-SX04530A10000			1220340	C4C-EX04530A10000	1220353
600 mm	C4C-SX06030A10000			1220341	C4C-EX06030A10000	1220354
750 mm	C4C-SX07530A10000			1220342	C4C-EX07530A10000	1220355
900 mm	C4C-SX09030A10000			1220343	C4C-EX09030A10000	1220356
1,050 mm	C4C-SX10530A10000			1220344	C4C-EX10530A10000	1220357
1,200 mm	C4C-SX12030A10000			1220345	C4C-EX12030A10000	1220358
1,350 mm	C4C-SX13530A10000			1220346	C4C-EX13530A10000	1220359
1,500 mm	C4C-SX15030A10000			1220347	C4C-EX15030A10000	1220360
1,650 mm	C4C-SX16530A10000			1220348	C4C-EX16530A10000	1220363
1,800 mm	C4C-SX18030A10000			1220349	C4C-EX18030A10000	1220362
1,950 mm	C4C-SX19530A10000			1220350	C4C-EX19530A10000	1220361
2,100 mm	C4C-SX21030A10000			1220351	C4C-EX21030A10000	1220364

## deTec4 Ex

- **Application:** Explosive areas
- **Safety level:** PL e, SIL 3, Type 4
- **Function range:** deTec4 (protective operation, beam coding, restart interlock, external device monitoring (EDM), chain, smart presence detection, reduced resolution, 2-signal muting, dynamic protective field width in normal operation, integrated laser alignment aid)
- **Connection type:** connecting cable, 30 m, flying lead, 8-wire
- **Enclosure rating:** IP65, IP66
- **Ex-approvals:** ATEX for gas: II 2 G Ex db IIB T6, ATEX for dust: II 2 D Ex tb IIIC T56 °C Db IP6X, NFPA 70/NEC 500 Class I, Div. 1, Groups C and D, NFPA 70/NEC 500 Class II, Div. 1, Groups E, F and G, NFPA 70/NEC 500 Class III, Div. 1
- **Note:** Sensor pre-assembled in explosion-proof enclosure including connecting cable (30 m, 8-wire, flying leads). Depending on national regulations and requirements, a cable gland may have to be installed. The cable gland is available as an accessory.

Resolution	Scanning range	Protective field height	Sender		Receiver	
			Type	Part no.	Type	Part no.
30 mm	25.2 m	450 mm	EXS-06D6113A020	1097705	EXE-06D6113A020	1097704
		600 mm	EXS-06D6213A020	1097702	EXE-06D6213A020	1097701
		900 mm	EXS-09D6413A020	1097708	EXE-09D6413A020	1097707
		1,200 mm	EXS-12D6613A020	1097711	EXE-12D6613A020	1097710
		1,500 mm	EXS-12D6813A020	1097714	EXE-12D6813A020	1097713

## deTec4 Core Ex

- **Application:** Explosive areas
- **Safety level:** PL e, SIL 3, Type 4
- **Function range:** deTec Core (protective operation)
- **Connection type:** Connecting cable, 30 m, flying leads, 5-wire
- **Enclosure rating:** IP65, IP66
- **Ex-approvals:** ATEX for gas: II 2 G Ex db IIB T6, ATEX for dust: II 2 D Ex tb IIIC T56 °C Db IP6X, NFPA 70/NEC 500 Class I, Div. 1, Groups C and D, NFPA 70/NEC 500 Class II, Div. 1, Groups E, F and G, NFPA 70/NEC 500 Class III, Div. 1
- **Note:** Sensor pre-assembled in explosion-proof enclosure including connecting cable (30 m, 5-wire, flying leads). Depending on national regulations and requirements, a cable gland may have to be installed. The cable gland is available as an accessory.

Resolution	Scanning range	Protective field height	Sender		Receiver	
			Type	Part no.	Type	Part no.
30 mm	10 m	600 mm	EXS-06D6203B020	1068407	EXE-06D6203B020	1068406
		900 mm	EXS-09D6403B020	1068410	EXE-09D6403B020	1068409
		1,200 mm	EXS-12D6603B020	1068413	EXE-12D6603B020	1068412
		1,500 mm	EXS-12D6803B020	1068416	EXE-12D6803B020	1068415

deTec4 Core Vibes / scanning range 0 m ... 15 m

- **Application:** Machines with strong shock or vibration loads
- **Safety level:** PL e, SIL 3, Type 4
- **Function range:** deTec Core (protective operation)
- **Connection type:** male connector M12, 5-pin
- **Enclosure rating:** IP65, IP67

Resolution	Scanning range	Protective field height	Sender		Receiver	
			Type	Part no.	Type	Part no.
30 mm	15 m	300 mm	C4C-SV03030A10000	1223203	C4C-EV03030A10000	1223204
		450 mm	C4C-SV04530A10000	1223205	C4C-EV04530A10000	1223206
		600 mm	C4C-SV06030A10000	1223207	C4C-EV06030A10000	1223208
		750 mm	C4C-SV07530A10000	1116541	C4C-EV07530A10000	1116542
		900 mm	C4C-SV09030A10000	1223209	C4C-EV09030A10000	1223210
		1,050 mm	C4C-SV10530A10000	1110314	C4C-EV10530A10000	1110313
		1,200 mm	C4C-SV12030A10000	1113026	C4C-EV12030A10000	1113027
		1,350 mm	C4C-SV13530A10000	1109104	C4C-EV13530A10000	1109105
		1,500 mm	C4C-SV15030A10000	1115837	C4C-EV15030A10000	1115838
		1,650 mm	C4C-SV16530A10000	1108139	C4C-EV16530A10000	1108140
		1,800 mm	C4C-SV18030A10000	1115176	C4C-EV18030A10000	1115177
		1,950 mm	C4C-SV19530A10000	On request	C4C-EV19530A10000	On request
		2,100 mm	C4C-SV21030A10000	On request	C4C-EV21030A10000	On request

deTec4 Core Vibes / scanning range 1.8 m ... 3.8 m

- **Application:** Machines with strong shock or vibration loads
- **Safety level:** PL e, SIL 3, Type 4
- **Function range:** deTec Core (protective operation)
- **Connection type:** male connector M12, 5-pin
- **Enclosure rating:** IP65, IP67

Resolution	Scanning range	Protective field height	Sender		Receiver	
			Type	Part no.	Type	Part no.
30 mm	3.8 m	300 mm	C4C-SV03030C10000	1223194	C4C-EV03030B10000	1223195
		450 mm	C4C-SV04530C10000	1223196	C4C-EV04530B10000	1223197
		600 mm	C4C-SV06030C10000	1223198	C4C-EV06030B10000	1223232
		750 mm	C4C-SV07530C10000	1107652	C4C-EV07530B10000	1107654
		900 mm	C4C-SV09030C10000	1223173	C4C-EV09030B10000	1223174
		1,050 mm	C4C-SV10530C10000	1107656	C4C-EV10530B10000	1107657
		1,200 mm	C4C-SV12030C10000	1107658	C4C-EV12030B10000	1107659
		1,350 mm	C4C-SV13530C10000	1107660	C4C-EV13530B10000	1107661
		1,500 mm	C4C-SV15030C10000	1107662	C4C-EV15030B10000	1107663
		1,650 mm	C4C-SV16530C10000	1110966	C4C-EV16530B10000	1110967
		1,800 mm	C4C-SV18030C10000	1108491	C4C-EV18030B10000	1108493
		1,950 mm	C4C-SV19530C10000	1109675	C4C-EV19530B10000	1109676
		2,100 mm	C4C-SV21030C10000	1108492	C4C-EV21030B10000	1108495

## deTec4 Core Vibes / scanning range 3.8 m ... 6 m

- **Application:** Machines with strong shock or vibration loads
- **Safety level:** PL e, SIL 3, Type 4
- **Function range:** deTec Core (protective operation)
- **Connection type:** male connector M12, 5-pin
- **Enclosure rating:** IP65, IP67

Resolution	Scanning range	Protective field height	Sender		Receiver	
			Type	Part no.	Type	Part no.
30 mm	6 m	300 mm	C4C-SV03030C10000	1223194	C4C-EV03030C10000	1223199
		450 mm	C4C-SV04530C10000	1223196	C4C-EV04530C10000	1223200
		600 mm	C4C-SV06030C10000	1223198	C4C-EV06030C10000	1223201
		750 mm	C4C-SV07530C10000	1107652	C4C-EV07530C10000	1108415
		900 mm	C4C-SV09030C10000	1223173	C4C-EV09030C10000	1223202
		1,050 mm	C4C-SV10530C10000	1107656	C4C-EV10530C10000	1122694
		1,200 mm	C4C-SV12030C10000	1107658	C4C-EV12030C10000	1120046
		1,350 mm	C4C-SV13530C10000	1107660	C4C-EV13530C10000	1122047
		1,500 mm	C4C-SV15030C10000	1107662	C4C-EV15030C10000	1125458
		1,650 mm	C4C-SV16530C10000	1110966	C4C-EV16530C10000	1124216
		1,800 mm	C4C-SV18030C10000	1108491	C4C-EV18030C10000	1113587
		1,950 mm	C4C-SV19530C10000	1109675	C4C-EV19530C10000	1119719
		2,100 mm	C4C-SV21030C10000	1108492	C4C-EV21030C10000	1132856

## deTec2 Core Vibes / scanning range 0 m ... 15 m

- **Application:** Machines with strong shock or vibration loads
- **Safety level:** PL c, SIL 1, Type 2
- **Function range:** deTec Core (protective operation)
- **Connection type:** male connector M12, 5-pin
- **Enclosure rating:** IP65, IP67

Resolution	Scanning range	Protective field height	Sender		Receiver	
			Type	Part no.	Type	Part no.
30 mm	15 m	300 mm	C2C-SV03030A10000	1223223	C2C-EV03030A10000	1223224
		450 mm	C2C-SV04530A10000	1223225	C2C-EV04530A10000	1223226
		600 mm	C2C-SV06030A10000	1223227	C2C-EV06030A10000	1223228
		750 mm	C2C-SV07530A10000	1105493	C2C-EV07530A10000	1105495
		900 mm	C2C-SV09030A10000	1223229	C2C-EV09030A10000	1223230
		1,050 mm	C2C-SV10530A10000	1105498	C2C-EV10530A10000	1105500
		1,200 mm	C2C-SV12030A10000	1117788	C2C-EV12030A10000	1117789
		1,350 mm	C2C-SV13530A10000	1117790	C2C-EV13530A10000	1117791
		1,500 mm	C2C-SV15030A10000	1117792	C2C-EV15030A10000	1117793
		1,650 mm	C2C-SV16530A10000	On request	C2C-EV16530A10000	On request
		1,800 mm	C2C-SV18030A10000	1116834	C2C-EV18030A10000	1116836
		1,950 mm	C2C-SV19530A10000	On request	C2C-EV19530A10000	On request
		2,100 mm	C2C-SV21030A10000	On request	C2C-EV21030A10000	On request

deTec2 Core Vibes / scanning range 1.8 m ... 3.8 m

- **Application:** Machines with strong shock or vibration loads
- **Safety level:** PL c, SIL 1, Type 2
- **Function range:** deTec Core (protective operation)
- **Connection type:** male connector M12, 5-pin
- **Enclosure rating:** IP65, IP67

Resolution	Scanning range	Protective field height	Sender		Receiver	
			Type	Part no.	Type	Part no.
30 mm	3.8 m	300 mm	C2C-SV03030C10000	1223211	C2C-EV03030B10000	1223212
		450 mm	C2C-SV04530C10000	1223213	C2C-EV04530B10000	1223214
		600 mm	C2C-SV06030C10000	1223215	C2C-EV06030B10000	1223216
		750 mm	C2C-SV07530C10000	1105494	C2C-EV07530B10000	1105496
		900 mm	C2C-SV09030C10000	1223217	C2C-EV09030B10000	1223218
		1,050 mm	C2C-SV10530C10000	1105499	C2C-EV10530B10000	1105501
		1,200 mm	C2C-SV12030C10000	1120153	C2C-EV12030B10000	1129188
		1,350 mm	C2C-SV13530C10000	1107090	C2C-EV13530B10000	1107092
		1,500 mm	C2C-SV15030C10000	1107091	C2C-EV15030B10000	1107093
		1,650 mm	C2C-SV16530C10000	1108608	C2C-EV16530B10000	On request
		1,800 mm	C2C-SV18030C10000	1130172	C2C-EV18030B10000	On request
		1,950 mm	C2C-SV19530C10000	1122236	C2C-EV19530B10000	On request
		2,100 mm	C2C-SV21030C10000	On request	C2C-EV21030B10000	On request

deTec2 Core Vibes / scanning range 3.8 m ... 6 m

- **Application:** Machines with strong shock or vibration loads
- **Safety level:** PL c, SIL 1, Type 2
- **Function range:** deTec Core (protective operation)
- **Connection type:** male connector M12, 5-pin
- **Enclosure rating:** IP65, IP67

Resolution	Scanning range	Protective field height	Sender		Receiver	
			Type	Part no.	Type	Part no.
30 mm	6 m	300 mm	C2C-SV03030C10000	1223211	C2C-EV03030C10000	1223219
		450 mm	C2C-SV04530C10000	1223213	C2C-EV04530C10000	1223220
		600 mm	C2C-SV06030C10000	1223215	C2C-EV06030C10000	1223221
		750 mm	C2C-SV07530C10000	1105494	C2C-EV07530C10000	1105497
		900 mm	C2C-SV09030C10000	1223217	C2C-EV09030C10000	1223222
		1,050 mm	C2C-SV10530C10000	1105499	C2C-EV10530C10000	1105502
		1,200 mm	C2C-SV12030C10000	1120153	C2C-EV12030C10000	1120154
		1,350 mm	C2C-SV13530C10000	1107090	C2C-EV13530C10000	On request
		1,500 mm	C2C-SV15030C10000	1107091	C2C-EV15030C10000	1128204
		1,650 mm	C2C-SV16530C10000	1108608	C2C-EV16530C10000	1108609
		1,800 mm	C2C-SV18030C10000	1130172	C2C-EV18030C10000	1130117
		1,950 mm	C2C-SV19530C10000	1122236	C2C-EV19530C10000	1122237
		2,100 mm	C2C-SV21030C10000	On request	C2C-EV21030C10000	On request

## SICK AT A GLANCE

SICK is one of the leading manufacturers of intelligent sensors and sensor solutions for industrial applications. A unique range of products and services creates the perfect basis for controlling processes securely and efficiently, protecting individuals from accidents and preventing damage to the environment.

We have extensive experience in a wide range of industries and understand their processes and requirements. With intelligent sensors, we can deliver exactly what our customers need. In application centers in Europe, Asia and North America, system solutions are tested and optimized in accordance with customer specifications. All this makes us a reliable supplier and development partner.

Comprehensive services complete our offering: SICK LifeTime Services provide support throughout the machine life cycle and ensure safety and productivity.

For us, that is “Sensor Intelligence.”

## WORLDWIDE PRESENCE:

Contacts and other locations –[www.sick.com](http://www.sick.com)