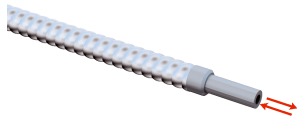


LL3-LT31450

LL3

FIBERS

SICK
Sensor Intelligence.



Ordering information

| Type | Part no. |
|-------------|----------|
| LL3-LT31450 | 2077269 |

Other models and accessories → www.sick.com/LL3

Detailed technical data

Features

| | |
|--|------------------------------------|
| Device type | Fibers |
| Functional principle | Proximity system |
| For fiber-optic sensor | GLL170(T), WLL180T |
| Fiber length | 450 mm |
| Fiber material | Glass |
| Jacket material | Chrome-plated helical metal spring |
| Outer diameter, fiber-optic cable connection | 2.2 mm |
| Smooth sleeve diameter (greatest diameter) | 5.8 mm |
| Fiber-optic head design | Smooth sleeve, Long end sleeve |
| Fiber arrangement | Multi-fiber – fiber bundle |
| Core structure | Multi-fiber – fiber bundle |
| Angle of dispersion < 60° | No |
| Compatibility with infrared light (1,450 nm) | Yes ¹⁾ |
| Diameter/thread size from 2 mm taper | ≥ 4 mm |
| Length of taper | ≥ 11.4 mm |
| Diameter of taper | ≥ 4 mm |
| Highly flexible/elastic fibers (bend radius 1–4 mm) | No |
| Adapter end sleeves required | No |
| Angle of dispersion | 60° |
| Integrated lens | No |
| Compatibility tip adapters | No |

¹⁾ Reduced sensing ranges possible when using a fiber-optic amplifier with infrared light.

Mechanics/electronics

| | |
|---------------------------------------|-------------------|
| Bend radius, fibre-optic cable | 20 mm |
| Ambient operating temperature | -10 °C ... +60 °C |

Classifications

| | |
|---------------------|----------|
| ECl@ss 5.0 | 27270905 |
| ECl@ss 5.1.4 | 27270905 |
| ECl@ss 6.0 | 27270905 |

| | |
|-----------------------|----------|
| ECI@ss 6.2 | 27270905 |
| ECI@ss 7.0 | 27270905 |
| ECI@ss 8.0 | 27270905 |
| ECI@ss 8.1 | 27270905 |
| ECI@ss 9.0 | 27270905 |
| ECI@ss 10.0 | 27270905 |
| ECI@ss 11.0 | 27270905 |
| ECI@ss 12.0 | 27270905 |
| ETIM 5.0 | EC002651 |
| ETIM 6.0 | EC002651 |
| ETIM 7.0 | EC002651 |
| ETIM 8.0 | EC002651 |
| UNSPSC 16.0901 | 39121528 |

Sensing ranges with WLL180T

| | |
|---|---|
| Operating mode 16 μs | 50 mm |
| Operating mode 70 μs | 140 mm |
| Operating mode 250 μs | 240 mm |
| Operating mode 2 ms | 300 mm |
| Operating mode 8 ms | 310 mm |
| Note | Sensing ranges related to fiber-optic sensors with type of light: visible red light |

Sensing ranges with GLL170

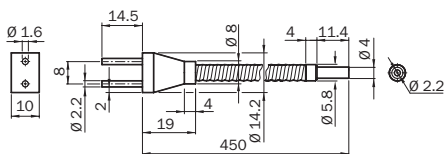
| | |
|---|-------|
| Operating mode 250 μs | 93 mm |
|---|-------|

Sensing ranges with GLL170T

| | |
|---|--------|
| Operating mode 50 μs | 165 mm |
| Operating mode 250 μs | 254 mm |

Dimensional drawing (Dimensions in mm (inch))

LL3-LT31450



SICK AT A GLANCE

SICK is one of the leading manufacturers of intelligent sensors and sensor solutions for industrial applications. A unique range of products and services creates the perfect basis for controlling processes securely and efficiently, protecting individuals from accidents and preventing damage to the environment.

We have extensive experience in a wide range of industries and understand their processes and requirements. With intelligent sensors, we can deliver exactly what our customers need. In application centers in Europe, Asia and North America, system solutions are tested and optimized in accordance with customer specifications. All this makes us a reliable supplier and development partner.

Comprehensive services complete our offering: SICK LifeTime Services provide support throughout the machine life cycle and ensure safety and productivity.

For us, that is “Sensor Intelligence.”

WORLDWIDE PRESENCE:

Contacts and other locations –www.sick.com