



# CDF600-2100

CDF600-2

4DPROCONNECTIVITY

**SICK**  
Sensor Intelligence.



### Ordering information

Type	Part no.
CDF600-2100	1058965

Other models and accessories → [www.sick.com/CDF600-2](http://www.sick.com/CDF600-2)



### Detailed technical data

#### Features

<b>Brief description</b>	Fieldbus proxy/gateway for connecting identification sensors to PROFIBUS-DP networks (PROFIBUS interface: 2 x M12, male connector/female connector, 5-pin)
<b>Supported products</b>	Lector® series CLV61x - CLV65x CLV69x RFID read/write device Mobile hand-held scanners
<b>Cloning module support (CMC)</b>	Integrated
<b>Supports display module (CMD)</b>	No
<b>Supports power supply module (CMP)</b>	No
<b>Supports fieldbus gateway (CMF)</b>	No

#### Mechanics/electronics

<b>Connection type</b>	1 x 15-pin D Sub HD female connector (DEVICE) 1 x 5-pin M12 male connector (POWER) 1 x 5-pin M12 female connector (EXT. IN1) 1 x 5-pin M12 male connector (PB IN) 1 x 5-pin M12 female connector (PB OUT) 1 x USB female connector micro B (AUX)
<b>Supply voltage</b>	(10 V DC ... 30 V DC)
<b>Power consumption</b>	< 5 W, if no sensor is connected and the digital input is not connected
<b>Housing</b>	Aluminum (unpainted)
<b>Housing color</b>	Aluminum (unpainted)
<b>Enclosure rating</b>	IP65
<b>Protection class</b>	III
<b>Weight</b>	385 g
<b>Dimensions (L x W x H)</b>	207 mm x 49.5 mm x 40.7 mm
<b>Scanner connection</b>	RS-232

#### Interfaces

<b>Serial</b>	✓, RS-232
Function	AUX
Data transmission rate	57.6 kBaud

<b>CAN</b>		✓
	Remark	Depending on sensor connected
<b>PROFIBUS DP</b>		✓, DPV0
	Function	Slave DPV0
	Data transmission rate	9.6 kbit/s ... 12 Mbit/s, Automatic detection
<b>Digital inputs</b>		1
<b>Digital outputs</b>		0
<b>Optical indicators</b>		4 LEDs
<b>Configuration software</b>		SOPAS ET

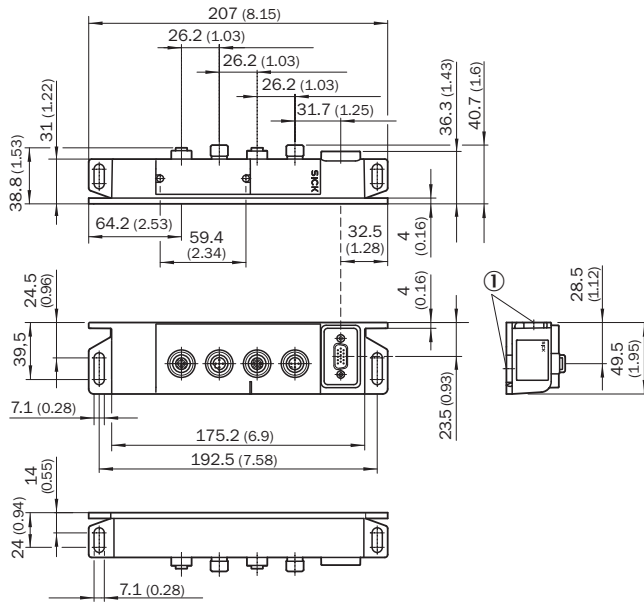
## Ambient data

<b>Electromagnetic compatibility (EMC)</b>	EN 61000-6-3/A1:2011-03 / EN 61000-6-2:2005-08
<b>Vibration resistance</b>	EN 60068-2-6:2008-02
<b>Ambient operating temperature</b>	-35 °C ... +50 °C
<b>Storage temperature</b>	-35 °C ... +70 °C
<b>Permissible relative humidity</b>	< 90 %, Non-condensing

## Classifications

<b>ECl@ss 5.0</b>	27242208
<b>ECl@ss 5.1.4</b>	27242608
<b>ECl@ss 6.0</b>	27242608
<b>ECl@ss 6.2</b>	27242608
<b>ECl@ss 7.0</b>	27242608
<b>ECl@ss 8.0</b>	27242608
<b>ECl@ss 8.1</b>	27242608
<b>ECl@ss 9.0</b>	27242608
<b>ECl@ss 10.0</b>	27242608
<b>ETIM 5.0</b>	EC001604
<b>ETIM 6.0</b>	EC001604
<b>ETIM 7.0</b>	EC001604
<b>UNSPSC 16.0901</b>	32151705





**Dimensional drawing** (Dimensions in mm (inch))



① For cylinder head screw M6 x 12

**Recommended accessories**

Other models and accessories → [www.sick.com/CDF600-2](http://www.sick.com/CDF600-2)

	<b>Brief description</b>	<b>Type</b>	<b>Part no.</b>
<b>Plug connectors and cables</b>			
	Head A: Flying leads Head B: Flying leads Cable: PROFIBUS DP, PUR, shielded	LTG-2102-MW	6021355
	Head A: female connector, M12, 5-pin, straight, A-coded Head B: Flying leads Cable: Sensor/actuator cable, PUR, halogen-free, shielded, 5 m	YF2A25-050UB6XLEAX	2095733
	Head A: male connector, USB-A Head B: male connector, Micro-B Cable: USB 2.0, unshielded, 2 m	USB cable	6036106
	Head A: female connector, M12, 12-pin, straight Head B: male connector, D-Sub-HD, 15-pin, straight Cable: Power, serial, CAN, digital I/Os, shielded, 3 m	YF2Z1B-030XXMHDAC	2042914
	Head A: female connector, M12, 17-pin, straight Head B: male connector, D-Sub-HD, 15-pin, straight Cable: Power, serial, CAN, digital I/Os, shielded, 3 m	YF2Z1D-030XXMHDAC	2055420

## SICK AT A GLANCE

SICK is one of the leading manufacturers of intelligent sensors and sensor solutions for industrial applications. A unique range of products and services creates the perfect basis for controlling processes securely and efficiently, protecting individuals from accidents and preventing damage to the environment.

We have extensive experience in a wide range of industries and understand their processes and requirements. With intelligent sensors, we can deliver exactly what our customers need. In application centers in Europe, Asia and North America, system solutions are tested and optimized in accordance with customer specifications. All this makes us a reliable supplier and development partner.

Comprehensive services complete our offering: SICK LifeTime Services provide support throughout the machine life cycle and ensure safety and productivity.

For us, that is “Sensor Intelligence.”

## WORLDWIDE PRESENCE:

Contacts and other locations –[www.sick.com](http://www.sick.com)