



G6

Way above the standard – the economic way to business class

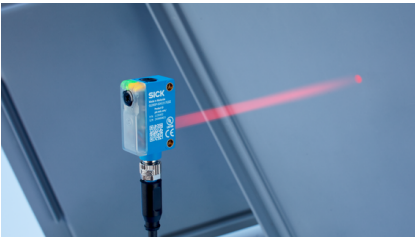
SICK
Sensor Intelligence.

Advantages



Way above the standard – the economic way to Business Class

The photoelectric sensors of the G6 product family use both PinPoint LEDs and laser technology. They come in a 1-inch housing mounted using metal inserts with M3 threaded holes. The G6 product portfolio also offers maximum flexibility for solving your application requirements.



Simple alignment using the PinPoint LED
Precise, highly visible light spot for easy sensor alignment, even under difficult application conditions



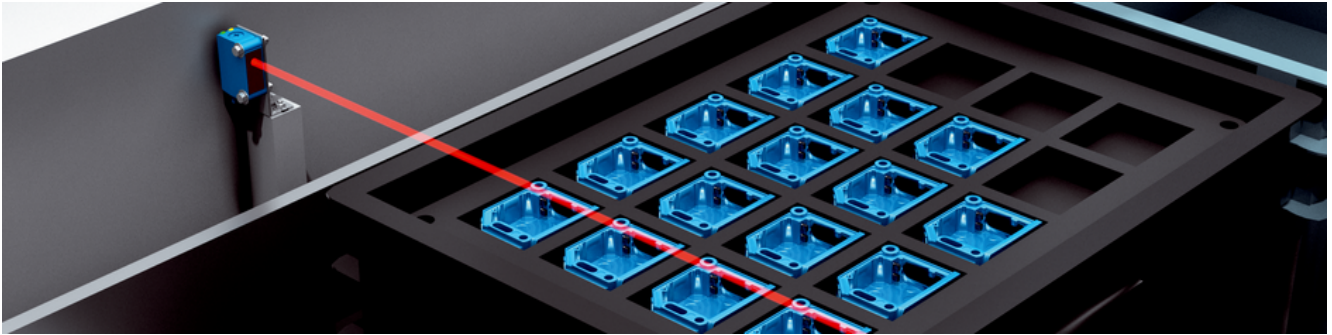
Easy mounting due to metal inserts with M3 thread
For quick and easy mounting



Easy adjustment thanks to user-friendly potentiometer
Quick installation and commissioning

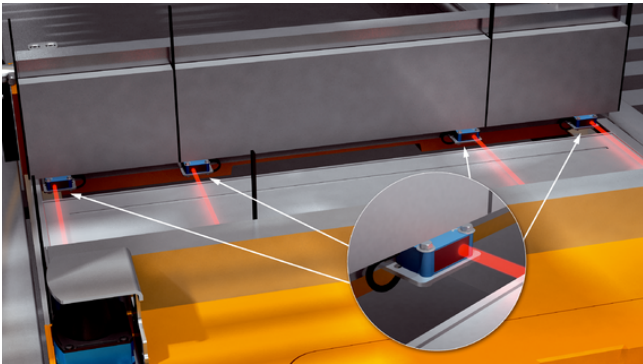


The G6 product family offers an extensive portfolio of photoelectric sensors for object detection which are suited for a wide range of applications.

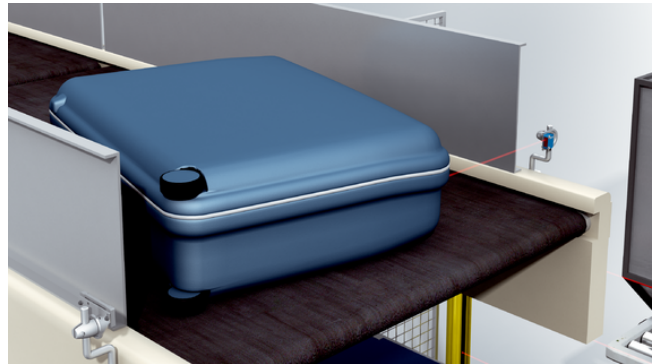


Quick to mount and ready to operate right away

Thanks to the reinforced metal inserts with M3 threaded holes, the G6 photoelectric sensor located in the miniature housing can be mounted quickly and securely. This means the photoelectric sensor is ready for use right away to demonstrate its high performance in your manufacturing processes.



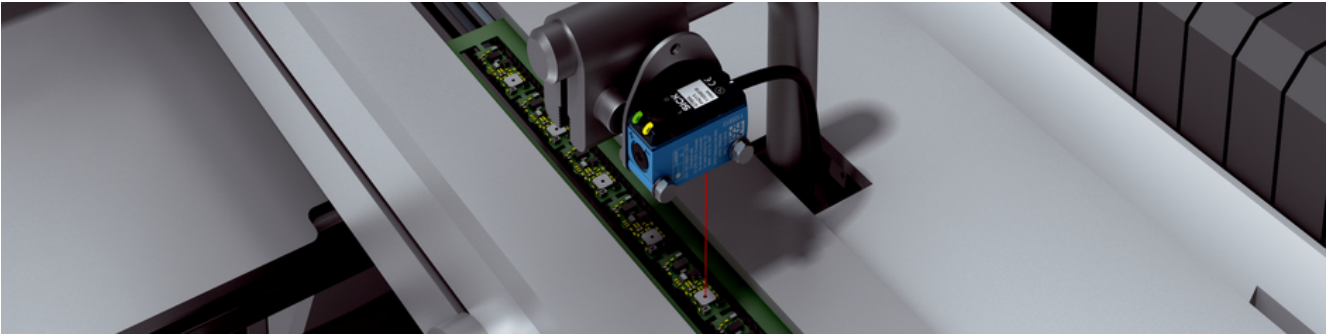
Thanks to the PinPoint LED, the G6 miniature photoelectric sensor reliably detects the object. The G6 also requires little space due to its compact design, thus making it ideal for applications where space is at a premium.



The G6 can be adjusted quickly, ensuring smooth processes at transfer points for baggage.

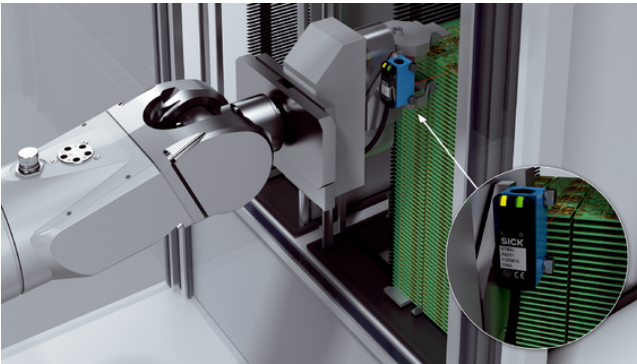


With PinPoint LED and secure mounting, the G6 product family is a low-price and user-friendly solution for countless applications

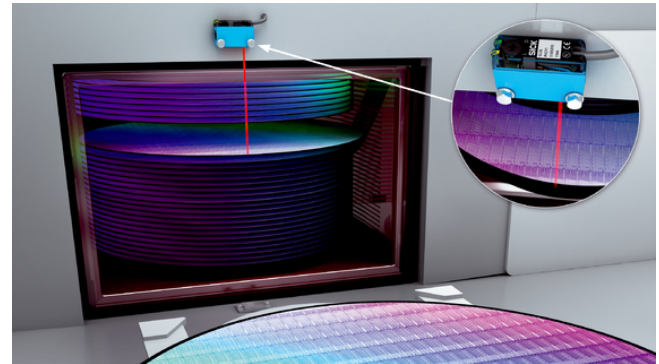


Reliable detection of delicate objects

In addition to its optimal performance, the G6 photoelectric proximity sensor also features a space-saving 1-inch housing. This enables a high level of flexibility in the machine design. The precise laser detection also ensures excellent sensor performance, even under difficult conditions. The G6 laser is therefore perfectly suited for the detection of small parts in electronics production.



The G6 laser portfolio features photoelectric proximity sensors with background suppression and energetic photoelectric proximity sensors with a sensing range of 400 mm and a light beam diameter of 0.4 mm. That is why the G6 laser is perfect for integration into robot arms and use in automation engineering.



Thanks to its small light beam diameter, the G6 laser is perfect for the detection of wafer discs in handling processes in the semi-conductor industry.



With its laser light spot, the large sensing distance and precise detection, the G6 laser is the ideal solution for many industrial applications.



Rugged and reliable – stainless-steel sensors for washdown applications

With G6 Inox sensors, it's all about using devices that offer maximum reliability under very harsh ambient conditions to optimize production processes. Due to their rust-free stainless-steel housing, the sensors are highly durable. And their high chemical material resistance means they are a reliable option when faced with cleaning agents containing alcohols and alkalis as well as standard oils and lubricants. Thanks to these significant advantages, the G6 Inox sensors are ideal for use in the food and beverage industry. In this sector, hygiene takes top priority and is ensured by means of intensive cleaning and disinfection processes.



Easy to identify even after long periods of use The indestructible laser inscription means that the sensors' type designation will still be easy to read even after long-term use in a harsh environment.



Special coating on the PMMA front screen for additional resistance



The right sensor for your application – the rectangular housings of the G6 Inox product family offer great flexibility when it comes to installation and adjustment since the sensors can be installed with mounting brackets.



Always the first choice – particularly in harsh environments Due to their exceptional properties, G6 Inox stainless-steel sensors are particularly well-suited for use in industries with strict hygiene requirements and where ambient conditions can be harsh.



Technical data overview

| | |
|------------------------------------|----------------------------------------------------------------------------------------------------------------------|
| Dimensions (W x H x D) | 12 mm x 31.5 mm x 21 mm 15 mm x 44 mm x 22 mm 12 mm x 31.6 mm x 21 mm |
| Functional principle detail | Energetic Background suppression With minimum distance to reflector (dual lens system) (depends on variant) |
| Light source | PinPoint LED LED Laser (depends on variant) |
| Type of light | Visible red light / Infrared light (depends on variant) |
| Enclosure rating | IP67 / IP67 / IP69K (depends on variant) |
| Housing material | Plastic / metal (depends on variant) |
| Adjustment | Potentiometer / none (depends on variant) |

Product description

The photoelectric sensors in the G6 product family with their miniature housings will impress you across the board with both their standard mounting configuration of 1-inch spaced holes and also their functional characteristics. The variants with a stainless steel 1.4404 (316L) housing are especially resistant to chemicals and cleaning agents in washdown applications. With PinPoint LED and laser technology, metal inserts for mounting, large and bright indicator LEDs, user-friendly adjustment screws, IP67 and IP69K enclosure ratings, as well as the very latest ASIC technology from SICK, the G6 series far exceeds the current standard.

At a glance

- PinPoint LED and class 1 laser variants
- SICK ASIC, the result of decades of experience with photoelectric sensors
- Photoelectric proximity sensors with background suppression, energetic photoelectric proximity sensors, and through-beam photoelectric sensors
- ABS plastic housing and V4A stainless-steel 1.4404 (316L) housing
- Enclosure ratings IP67 and IP69K

Your benefits

- PinPoint LEDs (with visible red light and infrared light) or variants with a laser light spot enable objects to be detected reliably and are therefore suitable for a broad range of applications
- Superior optical performance and robustness thanks to the ASIC from SICK
- Quick and easy mounting and high durability thanks to the metal inserts with M3 thread
- Easy installation and adjustment with user friendly potentiometer and highly visible indicator LEDs
- Variants with a stainless steel housing and IP69K enclosure rating ensure a long sensor service life in demanding washdown applications

Fields of application

- Industries with high cleaning requirements (e.g. food and beverage)
- Harsh environments requiring tough metal housing. e.g. due to mechanical impacts
- Applications with high aesthetic standards

Ordering information

Other models and accessories → www.sick.com/G6

- **Sensing range min. / max.:** 10 mm / 300 mm
- **Functional principle:** Photoelectric proximity sensor
- **Functional principle detail:** Energetic
- **Switching mode:** Light/dark switching
- **Switching output:** NPN

| Light source | Type of light | Connection type | Housing | Type | Part no. |
|--------------|-------------------|----------------------------------|-------------|------------|----------|
| PinPoint LED | Visible red light | Cable, 3-wire, 2 m ¹⁾ | Rectangular | GTE6-N1211 | 1050713 |

¹⁾ Do not bend below 0 °C.

- **Sensing range max.:** 10 mm ... 300 mm
- **Functional principle:** Photoelectric proximity sensor
- **Functional principle detail:** Energetic
- **Switching mode:** Light/dark switching
- **Light source:** PinPoint LED
- **Type of light:** visible red light
- **Housing:** rectangular

| Switching output | Connection type | Type | Part no. |
|------------------|----------------------------------------------------|----------------|----------|
| NPN | Cable with connector M8, 3-pin ¹⁾ | GTE6-N0211S05 | 1054573 |
| | Cable, 3-wire, 2 m ¹⁾ | GTE6-N1211S39 | 1066962 |
| | | GTE6-N1211S96 | 1106538 |
| | | GTE6-N1212 | 1051784 |
| | Male connector M8, 4-pin | GTE6-N4211 | 1050711 |
| | | GTE6-N4212 | 1051782 |
| PNP | Cable with M12 male connector, 4-pin ¹⁾ | GTE6-F0411VS01 | 1093662 |
| | | GTE6-F7411V | 1084097 |
| | | GTE6-P7211 | 1053589 |
| | | GTE6-P7212 | 1053628 |
| | Cable, 3-wire, 2 m ¹⁾ | GTE6-P1211 | 1050712 |
| | | GTE6-P1212 | 1051783 |
| | Male connector M8, 4-pin | GTE6-F4411V | 1084099 |
| | | GTE6-P4211 | 1050710 |
| | | GTE6-P4212 | 1051781 |

¹⁾ Do not bend below 0 °C.

- **Sensing range max.:** 30 mm ... 900 mm
- **Functional principle:** Photoelectric proximity sensor
- **Functional principle detail:** Energetic
- **Switching mode:** Light/dark switching
- **Housing:** rectangular

| Switching output | Light source | Type of light | Connection type | Type | Part no. |
|------------------|----------------------------------|---------------------|------------------------------------------------------------|---------------|----------|
| NPN | LED | Infrared light | Cable, 4-wire, 2 m ¹⁾ | GTE6-E2421V | 1084100 |
| | PinPoint LED | Visible red light | Cable, 3-wire, 2 m ¹⁾ | GTE6-N1231 | 1065745 |
| | | | | GTE6-N1231S95 | 1105719 |
| | | | | GTE6-N1232 | 1081668 |
| | Cable, 4-wire, 2 m ¹⁾ | Connector M8, 3-pin | GTE6-E2431V | 1084447 | |
| | | | GTE6-N3231 | 1068920 | |
| | | | Male connector M8, 4-pin | GTE6-N4231 | 1065761 |
| | GTE6-N4232 | 1070544 | | | |
| PNP | LED | Infrared light | Cable, 4-wire, 2 m ¹⁾ | GTE6-F2421V | 1084098 |
| | PinPoint LED | Visible red light | Cable with M12 male connector, 4-pin, 300 mm ¹⁾ | GTE6-P7231 | 1113824 |
| | | | Cable with M12 male connector, 4-pin ¹⁾ | GTE6-F7431V | 1096551 |
| | | | Cable with M8 male connector, 4-pin, 300 mm ¹⁾ | GTE6-P6231 | 1080231 |
| | | | Cable, 3-wire, 2 m ¹⁾ | GTE6-P1231 | 1065760 |
| | | | | GTE6-P1232 | 1069726 |
| | | | Cable, 4-wire, 2 m ¹⁾ | GTE6-F2431V | 1086173 |
| | | | Connector M8, 3-pin | GTE6-P3231 | 1068919 |
| | | | Male connector M8, 4-pin | GTE6-P4231 | 1065730 |

¹⁾ Do not bend below 0 °C.

- **Sensing range max.:** 0 mm ... 500 mm
- **Functional principle:** Photoelectric proximity sensor
- **Functional principle detail:** Background suppression
- **Switching mode:** Light/dark switching
- **Switching output:** PNP

| Light source | Type of light | Connection type | Housing | Type | Part no. |
|--------------|----------------|------------------------------------------------------------|-------------|---------------|----------|
| LED | Infrared light | Cable with M12 male connector, 4-pin, 300 mm ¹⁾ | Rectangular | GTB6-F7441S65 | 1086343 |

¹⁾ Do not bend below 0 °C.

- **Sensing range max.:** 5 mm ... 250 mm
- **Functional principle:** Photoelectric proximity sensor
- **Functional principle detail:** Background suppression
- **Light source:** PinPoint LED
- **Type of light:** visible red light
- **Housing:** rectangular

| Switching mode | Switching output | Connection type | Type | Part no. |
|----------------------------------|--------------------------------------|-------------------------------------------------------|----------------|----------------------------------|
| Dark switching | PNP | Cable with Stocko-connector (MKF-13264) ¹⁾ | GTB6-P0211S57 | 1077853 |
| | | | GTB6-P0611S59 | 1081383 |
| Light/dark switching | NPN | Cable with M12 male connector, 4-pin | GTB6-N0212S113 | 1140985 |
| | | | GTB6-N6211 | 1058774 |
| | | Cable with M8 male connector, 4-pin | GTB6-N6212 | 1058769 |
| | | | GTB6-N1211S38 | 1066320 |
| | | Cable, 3-wire, 1.9 m ²⁾ | GTB6-N1212S37 | 1066319 |
| | | | GTB6-N0211S51 | 1072044 |
| | | Cable, 3-wire, 2 m ²⁾ | GTB6-N0211S80 | 1095969 |
| | | | GTB6-N1211 | 1052441 |
| | | GTB6-N1211S40 | 1066965 | |
| | | Light/dark switching | NPN | Cable, 3-wire, 2 m ²⁾ |
| GTB6-N1212 | 1052445 | | | |
| Cable, 3-wire, 5 m ²⁾ | GTB6-N0211S36 | | | 1065839 |
| | GTB6-E2411V | | | 1084090 |
| Male connector M8, 4-pin | GTB6-E4411V | | | 1084094 |
| | GTB6-N4211 | | | 1052439 |
| | GTB6-N4212 | | | 1052443 |
| PNP | Cable with M12 male connector, 4-pin | | GTB6-P7211 | 1057705 |
| | | | GTB6-P7212 | 1087972 |

¹⁾ Do not bend below -30 °C.

²⁾ Do not bend below 0 °C.

| Switching mode | Switching output | Connection type | Type | Part no. |
|----------------|------------------|----------------------------------------------------|---------------|----------|
| | | Cable with M12 male connector, 4-pin ²⁾ | GTB6-F7411V | 1084096 |
| | | | GTB6-P0211S50 | 1070574 |
| | | Cable with M8 male connector, 4-pin | GTB6-P6211 | 1059320 |
| | | | GTB6-P6211P03 | 1098967 |
| | | Cable with connector M8, 3-pin | GTB6-P5211 | 1059333 |
| | | | GTB6-P5211S78 | 1093698 |
| | | Cable with connector M8, 4-pin, with knurled nut | GTB6-P0211S52 | 1073737 |
| | | | GTB6-P0211S54 | 1075587 |
| | | | GTB6-P0211S55 | 1075662 |
| | | | GTB6-P0211S60 | 1081533 |
| | | Cable, 3-wire, 2 m ²⁾ | GTB6-P1211 | 1052440 |
| | | | GTB6-P1212 | 1052444 |
| | | Cable, 4-wire, 2 m ²⁾ | GTB6-F2411V | 1084088 |
| | | Connector M8, 3-pin | GTB6-P3211 | 1084646 |
| | | Cable with M8 male connector, 4-pin, angled | GTB6-P0211S74 | 1089252 |
| | | Male connector M8, 4-pin | GTB6-F4211 | 1101441 |
| | | | GTB6-F4411V | 1084092 |
| | | | GTB6-P4211 | 1052438 |
| | | | GTB6-P4211S66 | 1086856 |
| | | | GTB6-P4211S83 | 1096868 |
| | | | GTB6-P4212 | 1052442 |

¹⁾ Do not bend below -30 °C.

²⁾ Do not bend below 0 °C.

- **Sensing range max.:** 5 mm ... 100 mm
- **Functional principle:** Photoelectric proximity sensor
- **Functional principle detail:** Background suppression
- **Switching mode:** Light/dark switching
- **Switching output:** NPN

| Light source | Type of light | Connection type | Housing | Type | Part no. |
|--------------|-------------------|----------------------------------|-------------|---------------|----------|
| PinPoint LED | Visible red light | Cable, 3-wire, 2 m ¹⁾ | Rectangular | GTB6-N1211S44 | 1068476 |

¹⁾ Do not bend below 0 °C.

- **Sensing range max.:** 5 mm ... 400 mm
- **Functional principle:** Photoelectric proximity sensor
- **Functional principle detail:** Background suppression
- **Light source:** PinPoint LED
- **Type of light:** visible red light
- **Housing:** rectangular

| Switching mode | Switching output | Connection type | Type | Part no. |
|----------------------|------------------|------------------------------------------------------------|----------------|----------|
| Light switching | PNP | Connector M8, 3-pin | GTB6-P3431V | 1097497 |
| Light/dark switching | NPN | Cable, 3-wire, 2 m ¹⁾ | GTB6-N1231 | 1077714 |
| | | Cable, 4-wire, 2 m ¹⁾ | GTB6-E2431V | 1084443 |
| | PNP | Cable with M12 male connector, 4-pin, 300 mm ¹⁾ | GTB6-P0231S68 | 1087744 |
| | | Cable with M12 male connector, 4-pin ¹⁾ | GTB6-F7431V | 1094259 |
| | | Cable with M8 male connector, 4-pin ²⁾ | GTB6-P0231S79 | 1095116 |
| | | Cable, 3-wire, 1.9 m ¹⁾ | GTB6-P0231S100 | 1117156 |
| | | Cable, 3-wire, 2 m ¹⁾ | GTB6-P1231 | 1074135 |
| | | Male connector M8, 4-pin | GTB6-F4431V | 1086172 |
| | | | GTB6-P4231 | 1079712 |

¹⁾ Do not bend below 0 °C.

²⁾ ± 14 mm.

- **Sensing range max.:** 5 mm ... 450 mm
- **Functional principle:** Photoelectric proximity sensor
- **Functional principle detail:** Background suppression
- **Light source:** LED
- **Type of light:** Infrared light
- **Housing:** rectangular

| Switching mode | Switching output | Connection type | Type | Part no. |
|----------------------|------------------|-----------------------------------------------------------|---------------|----------|
| Light switching | PNP | Cable with M8 male connector, 4-pin, 300 mm ¹⁾ | GTB6-P6441 | 1087334 |
| | | Cable with connector M8, 3-pin, 300 mm ¹⁾ | GTB6-P5441S73 | 1088429 |
| | | Cable, 3-wire, 2 m ¹⁾ | GTB6-P1441S46 | 1069066 |
| | | Connector M8, 3-pin | GTB6-P3441 | 1080971 |
| | | Male connector M8, 4-pin | GTB6-P4441 | 1082824 |
| Light/dark switching | NPN | Cable with connector M8, 3-pin, 300 mm ¹⁾ | GTB6-N5241 | 1097461 |
| | | Cable, 3-wire, 2 m ¹⁾ | GTB6-N1241 | 1082905 |
| | PNP | Cable, 3-wire, 2 m ¹⁾ | GTB6-P1241 | 1097680 |
| | | Male connector M8, 4-pin | GTB6-P4241 | 1082863 |

¹⁾ Do not bend below 0 °C.

- **Sensing range max.:** ≥ 50 mm
- **Functional principle:** Photoelectric proximity sensor
- **Functional principle detail:** Background suppression
- **Switching mode:** Light switching
- **Switching output:** PNP

| Light source | Type of light | Connection type | Housing | Type | Part no. |
|--------------|----------------|------------------------------------------------------------|-------------|----------------|----------|
| LED | Infrared light | Cable with M12 male connector, 4-pin, 300 mm ¹⁾ | Rectangular | GTB6-P0041S103 | 1118025 |

¹⁾ Do not bend below 0 °C.

- **Sensing range max.:** 5 mm ... 500 mm
- **Functional principle:** Photoelectric proximity sensor
- **Functional principle detail:** Background suppression
- **Switching mode:** Light switching
- **Switching output:** PNP
- **Light source:** LED
- **Type of light:** Infrared light
- **Housing:** rectangular

| Connection type | Type | Part no. |
|------------------------------------------------------------|---------------|----------|
| Cable with M12 male connector, 4-pin, 300 mm ¹⁾ | GTB6-P7441S56 | 1077541 |
| Cable with M12 male connector, 4-pin ¹⁾ | GTB6-F7441S76 | 1090968 |
| | GTB6-F7441S82 | 1096774 |
| Cable with connector M8, 3-pin ¹⁾ | GTB6-P5441 | 1081388 |

¹⁾ Do not bend below 0 °C.

- **Sensing range max.:** 6 mm ... 250 mm
- **Functional principle:** Photoelectric proximity sensor
- **Functional principle detail:** Background suppression
- **Switching mode:** Light switching
- **Switching output:** PNP

| Light source | Type of light | Connection type | Housing | Type | Part no. |
|--------------|-------------------|---------------------|-------------|---------------|----------|
| PinPoint LED | Visible red light | Connector M8, 3-pin | Rectangular | GTB6-P3411S41 | 1067605 |

- **Sensing range max.:** 15 mm ... 220 mm
- **Functional principle:** Photoelectric proximity sensor
- **Functional principle detail:** Background suppression
- **Switching mode:** Dark switching
- **Switching output:** PNP

| Light source | Type of light | Connection type | Housing | Type | Part no. |
|--------------|-------------------|-------------------------------------------------------|-------------|---------------|----------|
| PinPoint LED | Visible red light | Cable with Stocko-connector (MKF-13264) ¹⁾ | Rectangular | GTB6-P0011S90 | 1098048 |

¹⁾ Do not bend below -30 °C.

- **Sensing range max.:** 5 mm ... 110 mm
- **Functional principle:** Photoelectric proximity sensor
- **Functional principle detail:** Energetic
- **Switching mode:** Light/dark switching
- **Light source:** PinPoint LED
- **Type of light:** visible red light
- **Housing:** rectangular

| Switching output | Connection type | Type | Part no. |
|------------------|----------------------------------------|---------------|----------|
| NPN | Cable, 3-wire, 2 m ¹⁾ | GTE6-N1201S56 | 1075054 |
| | | GTE6-N1201S72 | 1088411 |
| PNP | Cable, 3-wire, 2 m ¹⁾ | GTE6-P1201S64 | 1085281 |
| | | GTE6-P4201S57 | 1075634 |
| | Male connector M8, 4-pin ¹⁾ | GTE6-P4201S63 | 1083159 |

¹⁾ Do not bend below 0 °C.

- **Sensing range max.:** 0 mm ... 70 mm
- **Functional principle:** Photoelectric proximity sensor
- **Functional principle detail:** Energetic
- **Switching mode:** Light/dark switching
- **Switching output:** NPN

| Light source | Type of light | Connection type | Housing | Type | Part no. |
|--------------|-------------------|----------------------------------|-------------|---------------|----------|
| PinPoint LED | Visible red light | Cable, 3-wire, 2 m ¹⁾ | Rectangular | GTE6-N1201S94 | 1104698 |

¹⁾ Do not bend below 0 °C.

- **Sensing range max.:** 0.03 m ... 6 m
- **Functional principle:** Photoelectric retro-reflective sensor
- **Functional principle detail:** With minimum distance to reflector (dual lens system)
- **Light source:** PinPoint LED
- **Type of light:** visible red light
- **Housing:** rectangular

| Switching mode | Switching output | Connection type | Type | Part no. | |
|----------------|---------------------|----------------------------------------------------|----------------------------------------------------|---------------|---------|
| Dark switching | PNP | Cable with M12 male connector, 4-pin ¹⁾ | GL6-P7311 | 1066207 | |
| | | | GL6-P7312 | 1066208 | |
| | | | GL6-P7411V | 1104194 | |
| | | Cable with M8 male connector, 4-pin ¹⁾ | GL6-V6311 | 1101833 | |
| | | | GL6-V6411 | 1100566 | |
| | | | GL6-P0311S66 | 1079226 | |
| | | PNP | Cable with connector M8, 3-pin | GL6G-P0411S45 | 1068944 |
| | | | | GL6-P0311S40 | 1066976 |
| | | | Cable with connector M8, 3-pin ¹⁾ | GL6-P0312P08 | 1081349 |
| | GL6-P1311 | | | 1079225 | |
| | Connector M8, 3-pin | | GL6-P3311 | 1081007 | |
| | | | GL6-P3411V | 1097411 | |
| | Light switching | PNP | Cable with M12 male connector, 4-pin ¹⁾ | GL6-P0311S114 | 1119915 |
| | | | | GL6-F4311 | 1066751 |
| | | | | GL6-P0512S60 | 1073718 |
| | | | GL6-P7511 | 1056039 | |

¹⁾ Do not bend below 0 °C.

| Switching mode | Switching output | Connection type | Type | Part no. |
|----------------------|----------------------|-------------------------------------------------------|--------------------------------------------|--------------|
| | | Cable with M8 male connector, 4-pin ¹⁾ | GL6-P0511S03 | 1052911 |
| | | | GL6-P0511S109 | 1117742 |
| | | | GL6-P0511S76 | 1088287 |
| | | | GL6-P0511S80 | 1090639 |
| | | Cable with MOLEX-connector 43020-0409 ¹⁾ | GL6-P0511S86 | 1097463 |
| | | | Cable with Phoenix connector ¹⁾ | GL6-P0511S11 |
| | | Cable with connector M12, 4-pin, angled ¹⁾ | GL6-P0511S111 | 1118923 |
| | | Cable with connector M8, 3-pin ¹⁾ | GL6-P0511S02 | 1052633 |
| | | | GL6-P0511S101 | 1110110 |
| | | | GL6-P0511S103 | 1112760 |
| | | | GL6-P0511S19 | 1061962 |
| | | Cable with connector, JST, 3-pin ¹⁾ | GL6-P0511P20 | 1114857 |
| | | | GL6-P0511S56 | 1073104 |
| | | Cable, 3-wire, 2 m ¹⁾ | GL6-P1511 | 1079227 |
| | | Cable, 3-wire, 4 m ¹⁾ | GL6-P0511S67 | 1079228 |
| | | Cable, 3-wire, 700 mm ¹⁾ | GL6-P0511S68 | 1079229 |
| | | Cable, 4-wire ¹⁾ | GL6-F2511S65 | 1077362 |
| | | Male connector M8, 4-pin | GL6-F4511S24 | 1062735 |
| | | | GL6-P4511 | 1052634 |
| | | | GL6-P4511S37 | 1065727 |
| Light/dark switching | NPN | Cable with AMP connector ¹⁾ | GL6-N0111S13 | 1059088 |
| | | | Cable with M12 male connector, 4-pin | GL6-N7210S74 |
| | | GL6-N7211 | 1087771 | |
| | | GL6-N7212 | 1087770 | |
| | NPN | Cable with M8 male connector, 4-pin | GL6-N6211 | 1062587 |
| | | | GL6-N6212 | 1062588 |
| | | Cable with connector, JST, 3-pin ¹⁾ | GL6-N0111S12 | 1059087 |
| | | Cable, 3-wire, 2 m ¹⁾ | GL6-N1111 | 1050709 |
| | | | GL6-N1111S39 | 1066964 |
| | GL6-N1112 | | 1051780 | |
| | GL6-N1112S70 | 1084571 | | |
| | GL6-N1211 | 1059923 | | |
| | Light/dark switching | NPN | Cable, 3-wire, 2 m ¹⁾ | GL6-N1211P14 |
| GL6-N1211S27 | | | | 1062937 |
| GL6-N1211S98 | | | | 1105720 |
| GL6-N1212 | | | | 1060814 |

¹⁾ Do not bend below 0 °C.

| Switching mode | Switching output | Connection type | Type | Part no. | |
|----------------------------------------------------|------------------|-------------------------------------------------------------------------------------------------------------------------------------------------------------------|--------------------------------------|--------------|---------|
| | | | GL6-N1212P16 | 1105101 | |
| | | | GL6-N1212S42 | 1068477 | |
| | | | GL6-N1212S99 | 1105729 | |
| | | | GL6G-N1211 | 1059925 | |
| | | | GL6G-N1212 | 1060811 | |
| | | | GL6G-N1212S01 | 1066255 | |
| | | Cable, 4-wire, 2 m ¹⁾ | GL6-E2411V | 1084102 | |
| | | Connector M8, 3-pin | GL6-N3211 | 1094438 | |
| | | | GL6-N3212 | 1094437 | |
| | | Cable with male connector, MOLEX 3-pin 3pitch 4,2 mm (9-01-4033) and contact pin AWG28 (39-00-0048), 600 +/- 10 mm (incl. 20 +/- 2 mm remote cable) ¹⁾ | GL6-N0111S89 | 1099322 | |
| | | Male connector M8, 4-pin | GL6-E4411V | 1084104 | |
| | | | GL6-N4111 | 1050707 | |
| | | | GL6-N4111S16 | 1061068 | |
| | | | GL6-N4112 | 1051778 | |
| | | | GL6-N4211 | 1059631 | |
| | | | GL6-N4212 | 1063491 | |
| | | | GL6G-N4211 | 1059633 | |
| | | | GL6G-N4212 | 1060809 | |
| | | PNP | Cable with M12 male connector, 4-pin | GL6-F7511S44 | 1068756 |
| | | | | GL6-P0211S49 | 1070568 |
| | | | | GL6-P0212S48 | 1070569 |
| | | | | GL6-P7211 | 1066884 |
| | | | | GL6-P7211P05 | 1067329 |
| GL6-P7212S55 | 1070552 | | | | |
| GL6G-P7211S96 | 1103653 | | | | |
| Cable with M12 male connector, 4-pin ¹⁾ | GL6-F0511S117 | | 1135850 | | |
| Light/dark switching | PNP | Cable with M12 male connector, 4-pin ¹⁾ | GL6-F7411V | 1084105 | |
| | | | GL6-F7511 | 1061399 | |
| | | | GL6-P0110P21 | 1130674 | |
| | | | GL6-P0111S18 | 1061608 | |
| | | | GL6-P0111S71 | 1086027 | |
| | | | GL6-P0112S72 | 1086028 | |
| | | | GL6-P7111 | 1052966 | |
| | | | GL6-P7112 | 1053590 | |

¹⁾ Do not bend below 0 °C.

| Switching mode | Switching output | Connection type | Type | Part no. |
|----------------------------------|---------------------|------------------------------------------------------------|---------------|----------------------------------|
| | | Cable with M8 male connector, 4-pin | GL6-P0211S105 | 1113475 |
| | | | GL6-P0211S69 | 1081522 |
| | | | GL6-P6211 | 1058851 |
| | | | GL6-P6212 | 1062753 |
| | | Cable with M8 male connector, 4-pin ¹⁾ | GL6-P6111 | 1060234 |
| | | | GL6-P6111P13 | 1098966 |
| | | | GL6-P6112 | 1060235 |
| | | Cable with connector M12, 4-pin, angled, 2 m ¹⁾ | GL6G-P0211S98 | 2142441 |
| | | Cable with connector M8, 3-pin, 1.54 m | GL6-P0211S108 | 1117625 |
| | | Cable with connector M8, 3-pin ¹⁾ | GL6-P0111S04 | 1054549 |
| | | | GL6-P0111S08 | 1057193 |
| | | | GL6-P0111S112 | 1119394 |
| | | | GL6-P0111S64 | 1074238 |
| | | | GL6-P0112P07 | 1081328 |
| | | Cable with connector M8, 4-pin, with knurled nut | GL6-P0211S104 | 1113341 |
| | | Cable, 3-wire, 10 m ¹⁾ | GL6-P0211S78 | 1089462 |
| | | Cable, 3-wire, 2 m ¹⁾ | GL6-P1111 | 1050708 |
| | | | GL6-P1112 | 1051779 |
| | | | GL6-P1112S06 | 1116648 |
| | | | GL6-P1112S84 | 1094532 |
| | | | GL6-P1211 | 1059922 |
| | | | GL6-P1212 | 1060815 |
| | | Light/dark switching | PNP | Cable, 3-wire, 2 m ¹⁾ |
| GL6G-P1212 | 1060812 | | | |
| Cable, 3-wire, 3 m ¹⁾ | GL6-P0112S52 | | | 1071362 |
| | GL6-P0112S54 | | | 1071368 |
| Cable, 3-wire, 5 m ¹⁾ | GL6-P0211S77 | | | 1089461 |
| | GL6-F2411V | | | 1084101 |
| Cable, 4-wire, 2 m ¹⁾ | GL6G-F2411V | | | 1084445 |
| | GL6-F0311S58 | | | 1073531 |
| Cable, 4-wire ¹⁾ | GL6-F0311S47 | | | 1069245 |
| | Connector M8, 3-pin | | | GL6-P3211 |

¹⁾ Do not bend below 0 °C.

| Switching mode | Switching output | Connection type | Type | Part no. |
|----------------|------------------|--------------------------|----------------------------------------|--------------|
| | | | GL6-P3212 | 1068970 |
| | | | GL6-P3212S63 | 1073763 |
| | | Male connector M8, 4-pin | GL6-F4411V | 1084103 |
| | | | GL6-F4611 | 1068338 |
| | | | GL6-P4110P09 | 1088584 |
| | | | GL6-P4110P11 | 1090376 |
| | | | GL6-P4110P19 | 1113305 |
| | | | GL6-P4111 | 1050706 |
| | | | GL6-P4111S01 | 1052553 |
| | | | GL6-P4111S92 | 1102163 |
| | | | GL6-P4112 | 1051777 |
| | | | GL6-P4211 | 1059241 |
| | | | GL6-P4212 | 1062110 |
| | | | GL6G-F4411V | 1101719 |
| | | | GL6G-F4611V | 1139446 |
| | | | GL6G-P4211 | 1059632 |
| | | | GL6G-P4211S71 | 1084967 |
| | | | GL6G-P4211S73 | 1086956 |
| | | | GL6G-P4212 | 1060810 |
| | | | Male connector M8, 4-pin ¹⁾ | GL6-04511S81 |

¹⁾ Do not bend below 0 °C.

- **Sensing range max.:** 0.03 m ... 7.2 m
- **Functional principle:** Photoelectric retro-reflective sensor
- **Functional principle detail:** With minimum distance to reflector (dual lens system)
- **Switching output:** PNP
- **Light source:** PinPoint LED
- **Type of light:** visible red light
- **Housing:** rectangular

| Switching mode | Connection type | Type | Part no. |
|----------------------|---------------------------------------------------------------------|---------------|----------|
| Dark switching | Cable with connector M8, 4-pin, with knurled nut, 1 m ¹⁾ | GL6-P0311S118 | 1138389 |
| | Cable, 3-wire, 2 m ¹⁾ | GL6-P1311S41 | 1067706 |
| Light/dark switching | - | GL6-P0111S25 | 1062887 |
| | Cable with Tyco connector ¹⁾ | GL6-P0111S09 | 1058698 |
| | Cable with connector M8, 4-pin, with knurled nut, 1 m ¹⁾ | GL6-P0111S62 | 1073739 |
| | Cable with connector M8, 4-pin, with knurled nut, 3 m ¹⁾ | GL6-P0111S61 | 1073738 |
| | Cable, 3-wire ¹⁾ | GL6-P1111S57 | 1073479 |
| | Male connector M8, 4-pin | GL6-F4611S55 | 1072662 |
| | | GL6-P4111S46 | 1069178 |

¹⁾ Do not bend below 0 °C.

- **Sensing range max.:** 0.05 m ... 5 m
- **Functional principle:** Photoelectric retro-reflective sensor
- **Functional principle detail:** With minimum distance to reflector (dual lens system)
- **Switching mode:** Light/dark switching
- **Switching output:** PNP

| Light source | Type of light | Connection type | Housing | Type | Part no. |
|--------------|-------------------|----------------------------------------------------|-------------|---------------|----------|
| PinPoint LED | Visible red light | Cable with M12 male connector, 4-pin ¹⁾ | Rectangular | GL6-P7102S107 | 1116810 |

¹⁾ Do not bend below 0 °C.

- **Sensing range max.:** 0.01 m ... 5 m
- **Functional principle:** Photoelectric retro-reflective sensor
- **Functional principle detail:** With minimum distance to reflector (dual lens system)
- **Switching output:** PNP
- **Light source:** LED
- **Type of light:** visible red light
- **Connection type:** Cable with M8 male connector, 4-pin (Do not bend below 0 °C.)
- **Housing:** rectangular

| Switching mode | Type | Part no. |
|----------------------|--------------|----------|
| Light switching | GL6-P0511S17 | 1061393 |
| Light/dark switching | GL6-P0111S91 | 1101834 |

- **Sensing range max.:** 0.03 m ... 4 m
- **Functional principle:** Photoelectric retro-reflective sensor
- **Functional principle detail:** With minimum distance to reflector (dual lens system)
- **Switching mode:** Dark switching
- **Switching output:** PNP
- **Light source:** PinPoint LED
- **Type of light:** visible red light
- **Housing:** rectangular

| Connection type | Type | Part no. |
|------------------------------------------------------------------------------------------------|---------------|----------|
| Cable with M12 plug, 5-pin, with two cables 0.77 m and 0.47 m long ¹⁾ | GL6-P0311S116 | 1128307 |
| Cable with connector M12, 5-pin, with dual cable, 0.57 m and 0.27 m cable length ¹⁾ | GL6-P0311S94 | 1102710 |

¹⁾ Do not bend below 0 °C.

- **Sensing range max.:** 0 m ... 15 m
- **Functional principle:** Through-beam photoelectric sensor
- **Light source:** PinPoint LED
- **Type of light:** visible red light
- **Housing:** rectangular

| Switching mode | Switching output | Connection type | Type | Part no. | |
|----------------------|------------------|----------------------------------------------------|----------------------------------|---------------|---------|
| - | - | Cable, 3-wire, 2 m ¹⁾ | GS6-P1111S62 | 1092839 | |
| | | Male connector M8, 4-pin | GS6-D4311 | 2058059 | |
| Dark switching | NPN | Cable with M8 male connector, 4-pin ¹⁾ | GSE6-N6311 | 1062399 | |
| | | | GSE6-N6312 | 1062397 | |
| | PNP | Cable with connector M8, 3-pin ¹⁾ | GSE6-P5311 | 1088017 | |
| Light/dark switching | NPN | Cable with M12 male connector, 4-pin ¹⁾ | GSE6-N7111 | 1054833 | |
| | | | GSE6-N7112 | 1054835 | |
| | | Cable with M8 male connector, 4-pin ¹⁾ | GSE6-N6111 | 1054849 | |
| | | | GSE6-N6112 | 1054852 | |
| | | | Cable, 3-wire, 2 m ¹⁾ | GSE6-N0111S52 | 1072046 |
| | | | | GSE6-N1111 | 1052449 |
| | | | | GSE6-N1111S15 | 1059191 |
| | | | | GSE6-N1112 | 1052453 |
| Light/dark switching | NPN | Cable, 3-wire, 2 m ¹⁾ | GSE6-N1211 | 1060791 | |
| | | | GSE6-N1212 | 1060795 | |
| | | | Cable, 4-wire, 2 m ¹⁾ | GSE6-E2411V | 1084108 |
| | | | Male connector M8, 4-pin | GSE6-E4411V | 1084110 |
| | | | | GSE6-N4111 | 1052447 |
| | | | | GSE6-N4112 | 1052451 |
| | | | | GSE6-N4211 | 1061395 |
| | | | | GSE6-N4212 | 1061397 |

¹⁾ Do not bend below 0 °C.

²⁾ Do not bend below 35 °C.

| Switching mode | Switching output | Connection type | Type | Part no. | |
|----------------|------------------|--------------------------------------------------------|---------------|------------|---------|
| | PNP | Cable with M12 male connector, 4-pin ¹⁾ | GSE6-P7111 | 1054830 | |
| | | | GSE6-P7112 | 1054831 | |
| | | Cable with M8 male connector, 4-pin ¹⁾ | GSE6-P6111 | 1054848 | |
| | | | GSE6-P6112 | 1054850 | |
| | | | GSE6-P6211 | 1061847 | |
| | | | GSE6-P6212 | 1061848 | |
| | | Cable with connector M8, 3-pin ¹⁾ | GSE6-P0211S58 | 1084824 | |
| | | | GSE6-P5211 | 1079603 | |
| | | Cable with connector, JST, 3-pin, 600 mm ²⁾ | GSE6-P0111S51 | 1072004 | |
| | | Cable, 3-wire, 2 m ¹⁾ | GSE6-P1111 | 1052448 | |
| | | | GSE6-P1112 | 1052452 | |
| | | | GSE6-P1211 | 1060792 | |
| | | | GSE6-P1211P14 | 1143273 | |
| | | | GSE6-P1212 | 1061398 | |
| | | Cable, 4-wire, 2 m ¹⁾ | GSE6-F2411V | 1084106 | |
| | | Connector M8, 3-pin | GSE6-P3211 | 1067659 | |
| | | Male connector M8, 4-pin | GSE6-F4411V | 1084109 | |
| | | | GSE6-P4110P07 | 1088585 | |
| | | | GSE6-P4111 | 1052446 | |
| | | | GSE6-P4112 | 1052450 | |
| | | | GSE6-P4211 | 1061394 | |
| | | | | GSE6-P4212 | 1061396 |

¹⁾ Do not bend below 0 °C.

²⁾ Do not bend below 35 °C.

- **Sensing range max.:** 0 m ... 2 m
- **Functional principle:** Through-beam photoelectric sensor
- **Switching mode:** Light/dark switching
- **Light source:** PinPoint LED
- **Type of light:** visible red light
- **Connection type:** Cable, 3-wire, 2 m (Do not bend below 0 °C.)
- **Housing:** rectangular

| Switching output | Type | Part no. |
|------------------|---------------|----------|
| NPN | GSE6-N1112P04 | 1080814 |
| PNP | GSE6-P1112P03 | 1080299 |

- **Sensing range max.:** 0 m ... 14.5 m
- **Functional principle:** Through-beam photoelectric sensor
- **Housing:** rectangular

| Switching mode | Switching output | Light source | Type of light | Connection type | Type | Part no. |
|----------------------|-------------------|--------------------------------------|----------------|----------------------------------------------------|---------------|----------|
| Dark switching | NPN | LED | Infrared light | Cable, 3-wire, 2 m ¹⁾ | GSE6-N1321S54 | 1074344 |
| | PNP | LED | Infrared light | Cable, 3-wire, 2 m ¹⁾ | GSE6-P1321S55 | 1078808 |
| Light/dark switching | NPN | LED | Infrared light | Cable, 3-wire, 2 m ¹⁾ | GSE6-N1121 | 1064653 |
| | | | | | GSE6-N1221 | 1064675 |
| | | | | | GSE6-N1221S65 | 1105721 |
| | | | | Cable, 4-wire, 2 m ¹⁾ | GSE6-E2421V | 1084114 |
| | | | | Male connector M8, 4-pin | GSE6-E4421V | 1084117 |
| | PNP | LED | Infrared light | Cable with M12 male connector, 4-pin ¹⁾ | GSE6-P0121S48 | 1070054 |
| | | | | | GSE6-P0121S56 | 1084759 |
| | | | | Cable, 3-wire, 2 m ¹⁾ | GSE6-P1121S14 | 1059111 |
| | | | | | GSE6-P1221 | 1073529 |
| | | | | | GSE6-P1221S72 | 1141188 |
| | | | | Cable, 4-wire, 2 m ¹⁾ | GSE6-F2421V | 1084113 |
| | | | | Male connector M8, 4-pin | GSE6-F4421V | 1084116 |
| | | | | | GSE6-P4121S31 | 1063527 |
| PinPoint LED | Visible red light | Cable with M12 male connector, 4-pin | GSE6-F7311V | 1092108 | | |

¹⁾ Do not bend below 0 °C.

- **Sensing range max.:** 0 m ... 10 m
- **Functional principle:** Through-beam photoelectric sensor
- **Light source:** PinPoint LED
- **Type of light:** visible red light
- **Connection type:** male connector M8, 4-pin
- **Housing:** rectangular

| Switching mode | Switching output | Type | Part no. |
|----------------------|------------------|--------------|----------|
| - | - | GS6-D4312S71 | 1112773 |
| Light/dark switching | PNP | GE6-P4212S71 | 1112774 |

- **Sensing range max.:** 60 mm ... 400 mm
- **Functional principle:** Photoelectric retro-reflective sensor
- **Functional principle detail:** With minimum distance to reflector (dual lens system)
- **Switching mode:** Light/dark switching
- **Light source:** PinPoint LED
- **Type of light:** visible red light
- **Housing:** rectangular

| Switching output | Connection type | Type | Part no. |
|------------------|---------------------------------------------------|---------------|----------|
| NPN | Cable, 3-wire, 2 m ¹⁾ | GL6G-N1211S72 | 1085829 |
| PNP | Cable with M8 male connector, 4-pin ¹⁾ | GL6G-P6211S95 | 1103554 |
| | Cable, 3-wire, 2 m ¹⁾ | GL6G-P1211S83 | 1094109 |
| | Male connector M8, 4-pin | GL6G-P4211S97 | 1104671 |

¹⁾ Do not bend below 0 °C.

- **Sensing range max.:** 5 mm ... 420 mm
- **Functional principle:** Photoelectric proximity sensor
- **Functional principle detail:** Background suppression
- **Switching mode:** Light/dark switching
- **Light source:** LED
- **Type of light:** Infrared light
- **Housing:** rectangular

| Switching output | Connection type | Type | Part no. |
|------------------|----------------------------------------------------|-------------|----------|
| NPN | Cable, 4-wire, 2 m ¹⁾ | GTB6-E2421V | 1084091 |
| | Male connector M8, 4-pin | GTB6-E4421V | 1084095 |
| PNP | Cable with M12 male connector, 4-pin ¹⁾ | GTB6-F7421V | 1094164 |
| | Cable, 4-wire, 2 m ¹⁾ | GTB6-F2421V | 1084089 |
| | Male connector M8, 4-pin | GTB6-F4421V | 1084093 |

¹⁾ Do not bend below 0 °C.

- **Sensing range min. / max.:** 10 mm / 400 mm
- **Functional principle:** Photoelectric proximity sensor
- **Functional principle detail:** Background suppression
- **Switching mode:** Light/dark switching
- **Light source:** laser
- **Type of light:** visible red light
- **Housing:** rectangular

| Switching output | Connection type | Type | Part no. |
|------------------|---------------------------------------------|-------------|----------|
| NPN | Cable with M8 male connector, 4-pin, 336 mm | GTB6L-E6211 | 1109661 |
| | | GTB6L-N6211 | 1109659 |
| | Cable, 3-wire, 2 m | GTB6L-N1211 | 1105811 |
| | Cable, 4-wire, 2 m | GTB6L-E2211 | 1105813 |
| | Connector M8, 3-pin | GTB6L-N3211 | 1117824 |
| | Male connector M8, 4-pin | GTB6L-E4211 | 1106320 |
| | | GTB6L-N4211 | 1109658 |
| PNP | Cable with M8 male connector, 4-pin, 336 mm | GTB6L-F6211 | 1105812 |
| | | GTB6L-P6211 | 1109657 |
| | Cable, 3-wire, 2 m | GTB6L-P1211 | 1109656 |
| | Cable, 4-wire, 2 m | GTB6L-F2211 | 1107210 |
| | Connector M8, 3-pin | GTB6L-P3211 | 1117820 |
| | Male connector M8, 4-pin | GTB6L-F4211 | 1109660 |
| | | GTB6L-P4211 | 1105810 |

- **Sensing range min. / max.:** 0 mm / 450 mm
- **Functional principle:** Photoelectric proximity sensor
- **Functional principle detail:** Energetic
- **Switching mode:** Light/dark switching
- **Light source:** laser
- **Type of light:** visible red light
- **Housing:** rectangular

| Switching output | Connection type | Type | Part no. |
|------------------|---------------------------------------------|-------------|----------|
| NPN | Cable with M8 male connector, 4-pin, 336 mm | GTE6L-E6211 | 1109688 |
| | | GTE6L-N6211 | 1109685 |
| | Cable, 3-wire, 2 m | GTE6L-N1211 | 1105814 |
| | Cable, 4-wire, 2 m | GTE6L-E2211 | 1105819 |
| | Connector M8, 3-pin | GTE6L-N3211 | 1117821 |
| | Male connector M8, 4-pin | GTE6L-E4211 | 1109687 |
| | | GTE6L-N4211 | 1105815 |
| PNP | Cable with M8 male connector, 4-pin, 336 mm | GTE6L-F6211 | 1109686 |
| | | GTE6L-P6211 | 1109684 |
| | Cable, 3-wire, 2 m | GTE6L-P1211 | 1109662 |
| | Cable, 4-wire, 2 m | GTE6L-F2211 | 1105817 |
| | Connector M8, 3-pin | GTE6L-P3211 | 1117676 |
| | Male connector M8, 4-pin | GTE6L-F4211 | 1105818 |
| | | GTE6L-P4211 | 1109683 |

- **Sensing range min. / max.:** 0.08 m / 12 m
- **Functional principle:** Photoelectric retro-reflective sensor
- **Switching mode:** Light/dark switching
- **Light source:** laser
- **Type of light:** visible red light
- **Housing:** rectangular

| Switching output | Connection type | Type | Part no. |
|---------------------------------------------|---------------------------------------------|----------------------------------------------|------------|
| NPN | Cable with M8 male connector, 4-pin, 336 mm | GL6L-E6211 | 1105825 |
| | | GL6L-E6212 | 1115583 |
| | | GL6L-N6211 | 1109725 |
| | | GL6L-N6212 | 1115577 |
| | Cable, 3-wire, 2 m | GL6L-N1211 | 1109691 |
| | | GL6L-N1212 | 1115575 |
| | Cable, 4-wire, 2 m | GL6L-E2211 | 1105824 |
| | | GL6L-E2212 | 1115581 |
| | Connector M8, 3-pin | GL6L-N3211 | 1117822 |
| | Male connector M8, 4-pin | GL6L-E4211 | 1109728 |
| | | GL6L-E4212 | 1115582 |
| | | GL6L-N4211 | 1109724 |
| | | GL6L-N4212 | 1115576 |
| | PNP | Cable with M12 male connector, 4-pin, 342 mm | GL6L-P7211 |
| GL6L-P7212 | | | 1122654 |
| Cable with M8 male connector, 4-pin, 336 mm | | GL6L-F6211 | 1109727 |
| | | GL6L-F6212 | 1115580 |
| | | GL6L-P6211 | 1109690 |
| | | GL6L-P6212 | 1115574 |
| Cable with connector M8, 3-pin, 236 mm | | GL6L-P0211S04 | 1149552 |
| Cable, 3-wire, 2 m | | GL6L-P1211 | 1109689 |
| | | GL6L-P1212 | 1115572 |
| Cable, 4-wire, 2 m | | GL6L-F2211 | 1109726 |
| | | GL6L-F2212 | 1115578 |
| Connector M8, 3-pin | | GL6L-P3211 | 1117677 |
| Cable with connector RJ12, 6-pin, 1 m | | GL6L-F0211S01 | 1122657 |
| Cable with connector RJ12, 6-pin, 2 m | | GL6L-F0211S02 | 1122658 |
| Male connector M8, 4-pin | | GL6L-F4211 | 1105823 |
| | | GL6L-F4212 | 1115579 |
| | | GL6L-P4211 | 1105822 |
| | GL6L-P4212 | 1115573 | |
| | GL6L-P4231 | 1133749 | |

- **Sensing range min. / max.:** 0 m / 40 m
- **Functional principle:** Through-beam photoelectric sensor
- **Switching mode:** Light/dark switching
- **Light source:** laser
- **Type of light:** visible red light
- **Housing:** rectangular

| Switching output | Connection type | Type | Part no. |
|------------------|---------------------------------------------|-------------|----------|
| NPN | Cable with M8 male connector, 4-pin, 336 mm | GSE6L-E6211 | 1109741 |
| | | GSE6L-N6211 | 1105829 |
| | Cable, 3-wire, 2 m | GSE6L-N1211 | 1105827 |
| | Cable, 4-wire, 2 m | GSE6L-E2211 | 1109732 |
| | Connector M8, 3-pin | GSE6L-N3211 | 1117823 |
| | Male connector M8, 4-pin | GSE6L-E4211 | 1109737 |
| | | GSE6L-N4211 | 1105828 |
| PNP | Cable with M8 male connector, 4-pin, 336 mm | GSE6L-F6211 | 1105831 |
| | | GSE6L-P6211 | 1109730 |
| | Cable, 3-wire, 2 m | GSE6L-P1211 | 1105826 |
| | Cable, 4-wire, 2 m | GSE6L-F2211 | 1109731 |
| | Connector M8, 3-pin | GSE6L-P3211 | 1117678 |
| | Male connector M8, 4-pin | GSE6L-F4211 | 1105830 |
| | | GSE6L-P4211 | 1109729 |

- **Sensing range min. / max.:** 5 mm / 400 mm
- **Functional principle:** Photoelectric proximity sensor
- **Functional principle detail:** Background suppression
- **Light source:** PinPoint LED
- **Type of light:** visible red light
- **Housing:** rectangular

| Switching mode | Switching output | Connection type | Type | Part no. |
|--------------------------|---------------------|----------------------------------------------|--------------------|----------|
| Light switching | NPN: open collector | Cable, 3-wire, 2 m | GTB6SP-1GE1116EZZZ | 1141179 |
| | | Male connector M8, 4-pin | GTB6SP-22E1116EZZZ | 1141177 |
| | PNP | Cable with M12 male connector, 4-pin, 348 mm | GTB6SP-34A1116EZZZ | 1151070 |
| | | Cable with M8 male connector, 4-pin, 337 mm | GTB6SP-32A1116EZZZ | 1141180 |
| | | | | 1150831 |
| | | Cable with connector M8, 3-pin, 300 mm | GTB6SP-31A1116EZZZ | 1141181 |
| | | Cable, 3-wire, 2 m | GTB6SP-1GA1116EZZZ | 1141178 |
| Male connector M8, 4-pin | GTB6SP-22A1116EZZZ | 1141176 | | |
| Light/dark switching | PNP | Cable with M12 male connector, 4-pin, 348 mm | GTB6SP-3481116OZZZ | 1151262 |

- **Sensing range min. / max.:** 10 mm / 350 mm
- **Functional principle:** Photoelectric proximity sensor
- **Functional principle detail:** Energetic
- **Switching mode:** Light switching
- **Light source:** PinPoint LED
- **Type of light:** visible red light
- **Housing:** rectangular

| Switching output | Connection type | Type | Part no. |
|---------------------|--------------------------|--------------------|----------|
| NPN: open collector | Cable, 3-wire, 2 m | GTE6SP-1GE1116EZZZ | 1135462 |
| | Male connector M8, 4-pin | GTE6SP-22E1116EZZZ | 1135460 |
| PNP | Cable, 3-wire, 2 m | GTE6SP-1GA1116EZZZ | 1135461 |
| | Male connector M8, 4-pin | GTE6SP-22A1116EZZZ | 1135458 |

- **Sensing range min. / max.:** 30 mm / 900 mm
- **Functional principle:** Photoelectric proximity sensor
- **Functional principle detail:** Energetic
- **Switching mode:** Light switching
- **Light source:** PinPoint LED
- **Type of light:** visible red light
- **Housing:** rectangular

| Switching output | Connection type | Type | Part no. |
|---------------------|----------------------------------------------|--------------------|----------|
| NPN: open collector | Cable, 3-wire, 2 m | GTE6SP-1GE1146EZZZ | 1135464 |
| | Connector M8, 3-pin | GTE6SP-21E1146EZZZ | 1139411 |
| | Male connector M8, 4-pin | GTE6SP-22E1146EZZZ | 1135466 |
| PNP | Cable with M12 male connector, 4-pin, 348 mm | GTE6SP-34A1146EZZZ | 1139413 |
| | Cable with M8 male connector, 4-pin, 337 mm | GTE6SP-32A1146EZZZ | 1139412 |
| | Cable, 3-wire, 2 m | GTE6SP-1GA1146EZZZ | 1135465 |
| | Connector M8, 3-pin | GTE6SP-21A1146EZZZ | 1151753 |
| | Male connector M8, 4-pin | GTE6SP-22A1146EZZZ | 1135463 |

- **Sensing range min. / max.:** 0.03 m / 6 m
- **Functional principle:** Photoelectric retro-reflective sensor
- **Functional principle detail:** With minimum distance to reflector (dual lens system)
- **Light source:** PinPoint LED
- **Type of light:** visible red light
- **Housing:** rectangular

| Switching mode | Switching output | Connection type | Type | Part no. |
|----------------|---------------------|----------------------------------------------|--------------------|----------|
| Dark switching | NPN: open collector | Cable, 3-wire, 2 m | GLD6SP-1GE111A0ZZZ | 1135407 |
| | | Connector M8, 3-pin | GLD6SP-21A111A0ZZZ | 1139406 |
| | PNP | Cable with M12 male connector, 4-pin, 348 mm | GLD6SP-34A111A0ZZZ | 1135401 |
| | | Cable, 3-wire, 2 m | GLD6SP-1GA111A0ZZZ | 1135408 |

| Switching mode | Switching output | Connection type | Type | Part no. |
|--------------------|---------------------|------------------------------------------------|--------------------|----------|
| Light switching | NPN: open collector | Cable with M12 male connector, 4-pin, 348 mm | GLD6SP-34E1217EZZZ | 1135409 |
| | | | | 1151722 |
| | | Cable with M8 male connector, 4-pin, 337 mm | GLD6SP-32E1217EZZZ | 1135413 |
| | | | | 1151607 |
| | | Cable, 3-wire, 2 m | GLD6SP-1GE1217EZZZ | 1135412 |
| | | | GLD6SP-1GE121AEZZZ | 1150892 |
| Light switching | NPN: open collector | Cable, 3-wire, 2 m | GLD6SP-1GE121AEZZZ | 1139401 |
| | | | | |
| | | Connector M8, 3-pin | GLD6SP-21E1217EZZZ | 1139408 |
| | | | | |
| | | Male connector M8, 4-pin | GLD6SP-22E1217EZZZ | 1135403 |
| | | | | 1151602 |
| | GLD6SP-22E121AEZZZ | | 1150893 | |
| | | | 1139395 | |
| | PNP | Cable with M12 male connector, 4-pin, 2,048 mm | GLD6SP-14A1217EZZZ | 1148201 |
| | | | | |
| | | Cable with M12 male connector, 4-pin, 348 mm | GLD6SP-34A1217EZZZ | 1135405 |
| | | | GLD6SP-34A121A0ZZZ | 1135415 |
| | | | GLD6SP-34A121AEZZZ | 1139402 |
| | | | | 1151601 |
| | | Cable with M8 male connector, 4-pin, 1.54 m | GLD6SP-A8A1217EZZZ | 1150119 |
| | | Cable with M8 male connector, 4-pin, 337 mm | GLD6SP-32A1217EZZZ | 1135399 |
| | | | | 1151603 |
| | | | GLD6SP-32A121AEZZZ | 1139403 |
| | | | | 1151605 |
| | | | 1150778 | |
| | | Cable with M8 male connector, 4-pin, 537 mm | GLD6SP-88A1217EZZZ | 1148202 |
| | | Cable, 3-wire, 2 m | GLD6SP-1GA1217EZZZ | 1135406 |
| | | | | 1151528 |
| | | | GLD6SP-1GA121A0ZZZ | 1139404 |
| | | | GLD6SP-1GA121AEZZZ | 1150890 |
| | | | 1139396 | |
| | | Connector M8, 3-pin | GLD6SP-21A1217EZZZ | 1151604 |
| | | | | 1150450 |
| | | Male connector M8, 4-pin | GLD6SP-22A1217EZZZ | 1135402 |
| | | | | 1150908 |
| GLD6SP-22A121A0ZZZ | | | 1135404 | |
| GLD6SP-22A121AEZZZ | | | 1150891 | |
| | 1139254 | | | |

| Switching mode | Switching output | Connection type | Type | Part no. |
|----------------------|------------------|----------------------------------------------|--------------------|----------|
| Light/dark switching | PNP | Cable with M12 male connector, 4-pin, 348 mm | GLD6SP-348121A0ZZZ | 1139441 |
| | | Male connector M8, 4-pin | GLD6SP-228111A0ZZZ | 1139439 |
| | | | GLD6SP-22812170ZZZ | 1139442 |

- **Sensing range min. / max.:** 0 m / 20 m
- **Functional principle:** Through-beam photoelectric sensor
- **Switching mode:** Light switching
- **Housing:** rectangular

| Switching output | Light source | Type of light | Connection type | Type | Part no. |
|---------------------|-------------------|---------------------------------------------|----------------------------------------------|--------------------|--------------------|
| NPN: open collector | LED | Infrared light | Cable, 3-wire, 2 m | GSE6SI-1GE1217EZZZ | 1135349 |
| | | | | GSE6SI-1GE121AEZZZ | 1139428 |
| | PinPoint LED | Visible red light | Cable with M12 male connector, 4-pin, 348 mm | GSE6SP-34E121AEZZZ | 1139420 |
| | | | | Cable, 3-wire, 2 m | GSE6SP-1GE1217EZZZ |
| | | | GSE6SP-1GE121AEZZZ | | 1139418 |
| | | | Male connector M8, 4-pin | GSE6SP-22E1217EZZZ | 1135347 |
| | | | | GSE6SP-22E121AEZZZ | 1139416 |
| | | | PNP | LED | Infrared light |
| PinPoint LED | Visible red light | Cable with M8 male connector, 4-pin, 337 mm | | | |
| | | | | GSE6SP-32A121AEZZZ | 1139421 |
| | | Cable with connector M8, 3-pin, 300 mm | | GSE6SP-31A1217EZZZ | 1139426 |
| | | Cable, 3-wire, 2 m | | GSE6SP-1GA1217EZZZ | 1135345 |
| | | | | GSE6SP-1GA121AEZZZ | 1139417 |
| | | Connector M8, 3-pin | | GSE6SP-21A1217EZZZ | 1139425 |
| | | Male connector M8, 4-pin | | GSE6SP-22A1217EZZZ | 1135346 |
| | | | | GSE6SP-22A121AEZZZ | 1139415 |

SICK AT A GLANCE

SICK is one of the leading manufacturers of intelligent sensors and sensor solutions for industrial applications. A unique range of products and services creates the perfect basis for controlling processes securely and efficiently, protecting individuals from accidents and preventing damage to the environment.

We have extensive experience in a wide range of industries and understand their processes and requirements. With intelligent sensors, we can deliver exactly what our customers need. In application centers in Europe, Asia and North America, system solutions are tested and optimized in accordance with customer specifications. All this makes us a reliable supplier and development partner.

Comprehensive services complete our offering: SICK LifeTime Services provide support throughout the machine life cycle and ensure safety and productivity.

For us, that is “Sensor Intelligence.”

WORLDWIDE PRESENCE:

Contacts and other locations –www.sick.com