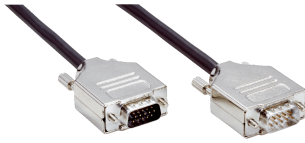


## Connection cable



## Ordering information

Type	Part no.
Connection cable	2067800

Other models and accessories → [www.sick.com/](http://www.sick.com/)

## Detailed technical data

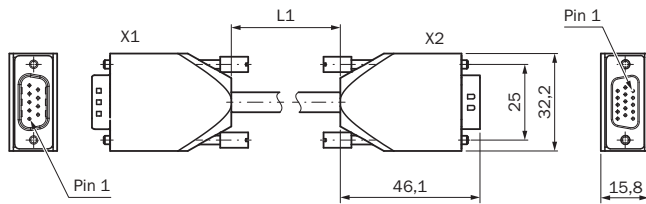
### Technical specifications

<b>Accessory group</b>	Plug connectors and cables
<b>Accessory family</b>	Connection cables
<b>Connection type head A</b>	Male connector, D-Sub-HD, 15-pin, straight
<b>Connection type head B</b>	Male connector, D-Sub, 9-pin, straight
<b>Cable</b>	2 m
<b>Shielding</b>	Shielded
<b>Note</b>	To connect two motor feedback splitter boxes
<b>Description</b>	For connecting a FX3-EBX3 or FX3-EBX4 connection unit to a FX3-EBX3 connection unit

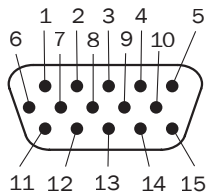
### Classifications

<b>eCl@ss 5.0</b>	19030312
<b>eCl@ss 5.1.4</b>	19030312
<b>eCl@ss 6.0</b>	27060304
<b>eCl@ss 6.2</b>	27060304
<b>eCl@ss 7.0</b>	27060304
<b>eCl@ss 8.0</b>	27060304
<b>eCl@ss 8.1</b>	27060304
<b>eCl@ss 9.0</b>	27060304
<b>eCl@ss 10.0</b>	27060304
<b>eCl@ss 11.0</b>	27060304
<b>eCl@ss 12.0</b>	27060304
<b>ETIM 5.0</b>	EC000830
<b>ETIM 6.0</b>	EC000830
<b>ETIM 7.0</b>	EC003249
<b>ETIM 8.0</b>	EC003249
<b>UNSPSC 16.0901</b>	26121604

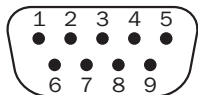
## Dimensional drawing (Dimensions in mm (inch))



## PIN assignment



Male connector, D-Sub, 9-pin		Male connector, D-Sub, 15-pin	
FX3-EBX3 connection unit		FX3-EBX3 or FX3-EBX4 connection unit	
Pin	Designation	Pin	Designation
1	ENC_A+	1	ENC_A+
2	ENC_B+	6	ENC_B+
3	ENC_C+	11	ENC_C+
4	Reserved	3	Reserved
5	ENC_24V	13	ENC_24V
6	ENC_A-	2	ENC_A-
7	ENC_B-	7	ENC_B-
8	ENC_C-	12	ENC_C-
9	ENC_OV	8	ENC_OV



Male connector, D-Sub, 9-pin		Male connector, D-Sub, 15-pin	
FX3-EBX3 connection unit		FX3-EBX3 or FX3-EBX4 connection unit	
Pin	Designation	Pin	Designation
1	ENC_A+	1	ENC_A+
2	ENC_B+	6	ENC_B+
3	ENC_C+	11	ENC_C+
4	Reserved	3	Reserved
5	ENC_24V	13	ENC_24V
6	ENC_A-	2	ENC_A-
7	ENC_B-	7	ENC_B-
8	ENC_C-	12	ENC_C-
9	ENC_OV	8	ENC_OV

## SICK AT A GLANCE

SICK is one of the leading manufacturers of intelligent sensors and sensor solutions for industrial applications. A unique range of products and services creates the perfect basis for controlling processes securely and efficiently, protecting individuals from accidents and preventing damage to the environment.

We have extensive experience in a wide range of industries and understand their processes and requirements. With intelligent sensors, we can deliver exactly what our customers need. In application centers in Europe, Asia and North America, system solutions are tested and optimized in accordance with customer specifications. All this makes us a reliable supplier and development partner.

Comprehensive services complete our offering: SICK LifeTime Services provide support throughout the machine life cycle and ensure safety and productivity.

For us, that is “Sensor Intelligence.”

## WORLDWIDE PRESENCE:

Contacts and other locations –[www.sick.com](http://www.sick.com)