

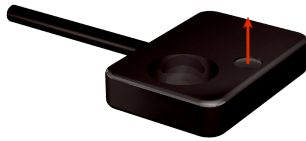


LL3-TE01

LL3

FIBERS

SICK
Sensor Intelligence.



Ordering information

| Type | Part no. |
|----------|----------|
| LL3-TE01 | 5325807 |

Other models and accessories → www.sick.com/LL3

Detailed technical data

Features

| | |
|--|---|
| Device type | Fibers |
| Functional principle | Through-beam system |
| Functional principle detail | Consisting of a sender and a receiver |
| For fiber-optic sensor | GLL170(T), WLL180T, WLL80 |
| Fiber length | 1,000 mm |
| Fiber material | Polymethylmethacrylat (PMMA) |
| Jacket material | Polyethylen (PE) |
| Fiber head material | Polycarbonat (PC) |
| Outer diameter, fiber-optic cable connection | 1 mm |
| Fiber-optic cable cuttable | ✓ |
| Fiber-optic head design | Flat type |
| Fiber arrangement | Monofiber |
| Core structure | 151 x Ø 0,05 mm Monofiber |
| Angle of dispersion < 60° | Yes |
| Compatibility with infrared light (1,450 nm) | No |
| Application | High flexible (static) |
| Highly flexible/elastic fibers (bend radius 1–4 mm) | Yes |
| Adapter end sleeves required | Yes |
| Angle of dispersion | 36.01° |
| Integrated lens | Yes |
| Minimal object diameter | 0.08 mm ¹⁾ |
| Included with delivery | Mounting, 2 x M2 hexagon nut, 8 x washer, 4 x M2 Phillips-head screw, adapter sleeves, BF-WLL160-10 (1.0 mm) adapter sleeves, FC fiber cutter (5304141) |
| Compatibility tip adapters | No |

¹⁾ Minimum detectable object was determined at optimum measuring distance and optimum setting.

Mechanics/electronics

| | |
|---------------------------------------|-------------------|
| Bend radius, fibre-optic cable | 1 mm |
| Ambient operating temperature | -40 °C ... +60 °C |

Classifications

| | |
|-------------------|----------|
| ECl@ss 5.0 | 27270905 |
|-------------------|----------|

| | |
|-----------------------|----------|
| ECI@ss 5.1.4 | 27270905 |
| ECI@ss 6.0 | 27270905 |
| ECI@ss 6.2 | 27270905 |
| ECI@ss 7.0 | 27270905 |
| ECI@ss 8.0 | 27270905 |
| ECI@ss 8.1 | 27270905 |
| ECI@ss 9.0 | 27270905 |
| ECI@ss 10.0 | 27270905 |
| ECI@ss 11.0 | 27270905 |
| ECI@ss 12.0 | 27270905 |
| ETIM 5.0 | EC002651 |
| ETIM 6.0 | EC002651 |
| ETIM 7.0 | EC002651 |
| ETIM 8.0 | EC002651 |
| UNSPSC 16.0901 | 39121528 |

Sensing ranges with WLL80

| | |
|---|----------|
| Operating mode 16 μs | 280 mm |
| Operating mode 70 μs | 845 mm |
| Operating mode 250 μs | 1,320 mm |
| Operating mode 500 μs | 1,585 mm |
| Operating mode 1 ms | 1,600 mm |
| Operating mode 2 ms | 1,600 mm |
| Operating mode 8 ms | 1,600 mm |

Sensing ranges with WLL180T

| | |
|---|---|
| Operating mode 16 μs | 120 mm |
| Operating mode 70 μs | 350 mm |
| Operating mode 250 μs | 620 mm |
| Operating mode 2 ms | 1,250 mm |
| Operating mode 8 ms | 1,330 mm |
| Note | Sensing ranges related to fiber-optic sensors with type of light: visible red light |

Sensing ranges with GLL170

| | |
|---|--------|
| Operating mode 250 μs | 480 mm |
|---|--------|

Sensing ranges with GLL170T

| | |
|---|--------|
| Operating mode 50 μs | 370 mm |
| Operating mode 250 μs | 630 mm |

SICK AT A GLANCE

SICK is one of the leading manufacturers of intelligent sensors and sensor solutions for industrial applications. A unique range of products and services creates the perfect basis for controlling processes securely and efficiently, protecting individuals from accidents and preventing damage to the environment.

We have extensive experience in a wide range of industries and understand their processes and requirements. With intelligent sensors, we can deliver exactly what our customers need. In application centers in Europe, Asia and North America, system solutions are tested and optimized in accordance with customer specifications. All this makes us a reliable supplier and development partner.

Comprehensive services complete our offering: SICK LifeTime Services provide support throughout the machine life cycle and ensure safety and productivity.

For us, that is “Sensor Intelligence.”

WORLDWIDE PRESENCE:

Contacts and other locations –www.sick.com